

# GIUNZIONI - CURVES AND FITTINGS

I Giunti ARTEFERRO INOX®  
sono creati appositamente per aderire al meglio ai nostri  
tubi ed a tutti gli altri tubi presenti sul mercato.

ALTA QUALITÀ E MASSIMA RESA

The ARTEFERRO INOX®  
connectors

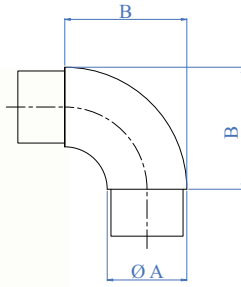
We created them especially to better adhere to our tubes  
and to all other tubes in the market.

HIGH QUALITY AND BETTER RESULTS

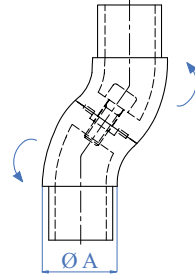


# Giunzioni • Curves and Fittings

## CONNETTORI PER TUBO TUBE FITTINGS



Curva 90°, satinata  
90° elbow, satin finish



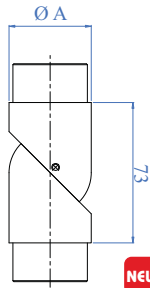
Curva regolabile, satinata  
Articulated elbow, satin finish



AISI304	AISI316	Per tubo For tube	A	B
–	E2001	Ø 33,7 x 2,0 mm 1 1/3" dia. X 5/64"	55 mm 2 11/16"	
E450/38	–	Ø 38,1 x 1,5 mm 1 1/2" dia. X 1/16"	55 mm 2 11/16"	
E450/304	E450	Ø 42,4 x 2,0 mm 1 2/3" dia. X 5/64"	65 mm 2 9/16"	
–	E2002	Ø 48,3 x 2,0 mm 1 7/8" dia. X 5/64"	73 mm 2 7/8"	
–	E2004	Ø 50,8 x 2,0 mm 2" dia. X 5/64"	78 mm 3 1/16"	
–	E2003	Ø 60,3 x 2,0 mm 2 3/8" dia. X 5/64"	90 mm 3 9/16"	

AISI316	Per tubo For tube	A
E447	Ø 33,7 x 2,0 mm 1 1/3" dia. X 5/64"	
E447/26	Ø 33,7 x 2,6 mm 1 1/3" dia. X 3/32"	
E4471/38	Ø 38,1 x 1,5 mm 1 1/2" dia. X 1/16"	
E4471	Ø 42,4 x 2,0 mm 1 2/3" dia. X 5/64"	
E4471/26	Ø 42,4 x 2,6 mm 1 2/3" dia. X 3/32"	

AISI316	Per tubo For tube	A
E4472	Ø 48,3 x 2,0 mm 1 7/8" dia. X 5/64"	
E4472/26	Ø 48,3 x 2,6 mm 1 7/8" dia. X 3/32"	
E4473	Ø 60,3 x 2,0 mm 2 3/8" dia. X 5/64"	
E4473/26	Ø 60,3 x 2,6 mm 2 3/8" dia. X 3/32"	

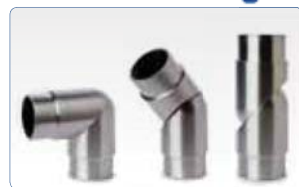


NEW

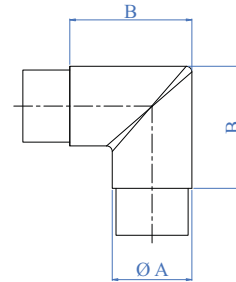
Connettore regolabile, satinato  
Articulated tube fitting, satin finish



AISI316	Per tubo For tube	A
E5586	Ø 33,7 x 2,0 mm 1 1/3" dia. X 5/64"	
E5587	Ø 42,4 x 2,0 mm 1 2/3" dia. X 5/64"	



info



90° ad angolo, satinata  
90° angle, satin finish

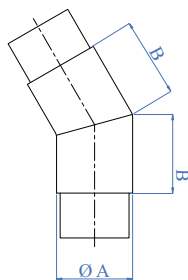


AISI304	AISI316	Per tubo For tube	A	B
–	E2011	Ø 33,7 x 2,0 mm 1 1/3" dia. X 5/64"	55 mm 2 11/16"	
E451/38	–	Ø 38,1 x 1,5 mm 1 1/2" dia. X 1/16"	55 mm 2 11/16"	
E451/304	E451	Ø 42,4 x 2,0 mm 1 2/3" dia. X 5/64"	65 mm 2 9/16"	
–	E2012	Ø 48,3 x 2,0 mm 1 7/8" dia. X 5/64"	67 mm 2 41/64"	
–	E2014	Ø 50,8 x 2,0 mm 2" dia. X 5/64"	78 mm 3 1/16"	
–	E2013	Ø 60,3 x 2,0 mm 2 3/8" dia. X 5/64"	85 mm 3 1/16"	



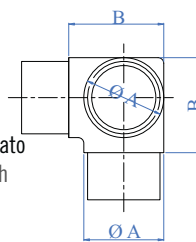
CONNETTORI PER TUBO  
TUBE FITTINGS

Angolo 45°, satinata  
45° angle, satin finish



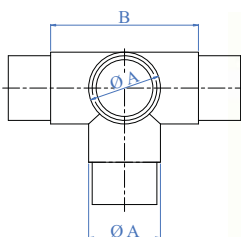
AISI316	Per tubo For tube	A	B
E2016	Ø 33,7 x 2,0 mm 1 1/3" dia. X 5/64"		25 mm 1"
E2019	Ø 40,0 x 2,0 mm 1 9/16" dia. X 5/64"		50 mm 2"
E2015	Ø 42,4 x 2,0 mm 1 2/3" dia. X 5/64"		50 mm 2"
E2017	Ø 48,3 x 2,0 mm 1 7/8" dia. X 5/64"		55 mm 2 11/64"
E2020	Ø 50,8 x 2,0 mm 2" dia. X 5/64"		50 mm 2"
E2018	Ø 60,3 x 2,0 mm 2 3/8" dia. X 5/64"		60 mm 2 23/64"

Raccordo d'angolo satinato  
3-way corner, satin finish



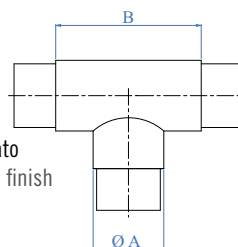
AISI316	Per tubo For tube	A	B
E2031	Ø 33,7 x 2,0 mm 1 1/3" dia. X 5/64"		55 mm 2 11/64"
E2034	Ø 40,0 x 2,0 mm 1 9/16" dia. X 5/64"		70 mm 2 3/4"
E203/38	Ø 38,1 x 2,0 mm 1 1/2" dia. X 1/16"		70 mm 2 3/4"
E203	Ø 42,4 x 2,0 mm 1 2/3" dia. X 5/64"		70 mm 2 3/4"
E2032	Ø 48,3 x 2,0 mm 1 7/8" dia. X 5/64"		74 mm 2 29/32"
E20321	Ø 50,8 x 2,0 mm 2" dia. X 5/64"		60 mm 2 23/64"
E2033	Ø 60,3 x 2,0 mm 2 3/8" dia. X 5/64"		81 mm 3 3/16"

Raccordo a doppia "T"  
satinato  
4-way flush "T", satin finish



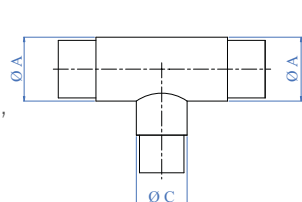
AISI316	Per tubo For tube	A	B
E2036	Ø 33,7 x 2,0 mm 1 1/3" dia. X 5/64"		76 mm 3"
E2035	Ø 42,4 x 2,0 mm 1 2/3" dia. X 5/64"		89 mm 3 1/2"
E2037	Ø 48,3 x 2,0 mm 1 7/8" dia. X 5/64"		90 mm 3 9/16"
E2038	Ø 60,3 x 2,0 mm 2 3/8" dia. X 5/64"		107 mm 4 7/32"

Raccordo a "T" satinato  
3-way flush "T", satin finish



AISI304	AISI316	Per tubo For tube	A	B
—	E2041	Ø 33,7 x 2,0 mm 1 1/3" dia. X 5/64"		76 mm 3"
E453/38	—	Ø 38,1 x 1,5 mm 1 1/2" dia. X 1/16"		76 mm 3"
—	E453/40	Ø 40,0 x 2,0 mm 1 9/16" dia. X 5/64"		87 mm 3 7/16"
—	E453	Ø 42,4 x 2,0 mm 1 2/3" dia. X 5/64"		87 mm 3 7/16"
—	E453/26	Ø 42,4 x 2,6 mm 1 2/3" dia. X 3/32"		87 mm 3 7/16"
—	E2042	Ø 48,3 x 2,0 mm 1 7/8" dia. X 5/64"		88 mm 3 15/32"
—	E20371	Ø 50,8 x 2,0 mm 2" dia. X 5/64"		67 mm 2 41/64"
—	E2043	Ø 60,3 x 2,0 mm 2 3/8" dia. X 5/64"		108 mm 4 13/32"

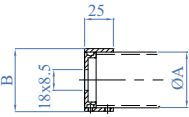
Raccordo a "T"  
satinato  
3-way flush "T", satin finish



AISI316	Per tubo For tube	A	C
E440	Ø 42,4 x 2,0 mm 1 2/3" dia. X 5/64"		Ø 33,7 x 2,0 mm 1 1/3" dia. X 5/64"
E445	Ø 48,3 x 2,0 mm 1 7/8" dia. X 5/64"		Ø 42,4 x 2,0 mm 1 2/3" X 5/64"

• Giunzioni • Curves and Fittings

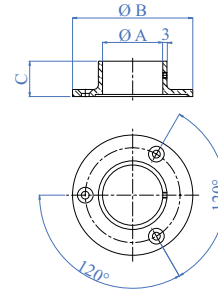
ANCORAGGI PER CORRIMANI  
ANCHORS FOR HANDRAILS



NEW

AISI316	Per tubo For tube A	B
E2069	Ø 33,7 mm 1 1/3" dia. X 5/64"	40 mm 1 9/16"
E2070	Ø 42,4 mm 1 2/3" dia. X 5/64"	48,6 mm 1 7/8"
E2071	Ø 48,3 mm 1 7/8" dia. X 5/64"	54,5 mm 2 1/8"

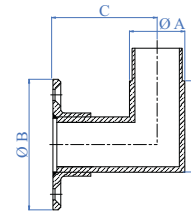
SOBRIO E DI FACILE INSTALLAZIONE  
SOBER AND EASY TO INSTALL



Ancoraggio per tubo,  
satinato  
Anchore for tube,  
satin finish



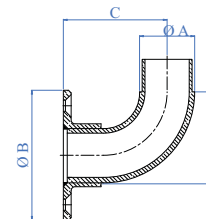
AISI304	AISI316	Per tubo For tube A	B	C
-	E2066	Ø 33,7 mm 1 1/3" dia.	Ø 70 mm 2 3/4" dia.	19 mm 3/4"
E456/38	-	Ø 38,1 1 1/2" dia.	Ø 70 mm 2 3/4" dia.	19 mm 3/4"
-	E456	Ø 42,4 mm 1 2/3" dia.	Ø 84 mm 3 5/16" dia.	25 mm 1"
-	E2067	Ø 48,3 mm 1 7/8" dia.	Ø 94 mm 3 45/64" dia.	28 mm 1 3/32"
-	E2068	Ø 60,3 mm 2 3/8" dia.	Ø 115 mm 4 17/32" dia.	40 mm 1 9/16"



Ancoraggio per tubo,  
satinato  
Anchore for tube,  
satin finish



AISI316	Per tubo For tube A	B	C	D
E4565	Ø 33,7 x 2,0 mm 1 1/3" dia. X 5/64"	Ø 70 mm 2 3/4" dia.	77 mm 3 1/32"	55 mm 2 11/64"
E4566	Ø 42,4 x 2,0 mm 1 2/3" dia. X 5/64"	Ø 84 mm 3 5/16" dia.	80 mm 3 5/32"	65 mm 2 9/16"
E4567	Ø 48,3 x 2,0 mm 1 7/8" dia. X 5/64"	Ø 95 mm 3 3/4" dia.	85 mm 3 11/32"	70 mm 2 3/4"
E4568	Ø 60,3 x 2,0 mm 2 3/8" dia. X 5/64"	Ø 115 mm 4 17/32" dia.	89 mm 3 1/2"	90 mm 3 9/16"



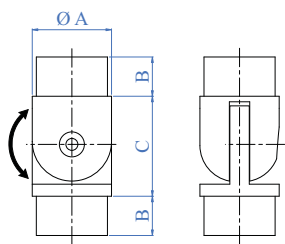
Ancoraggio per tubo,  
satinato  
Anchore for tube,  
satin finish



AISI316	Per tubo For tube A	B	C	D
E4560	Ø 33,7 x 2,0 mm 1 1/3" dia. X 5/64"	Ø 70 mm 2 3/4" dia.	77 mm 3 1/32"	55 mm 2 11/64"
E4561	Ø 42,4 x 2,0 mm 1 2/3" dia. X 5/64"	Ø 84 mm 3 5/16" dia.	84 mm 3 5/16"	65 mm 2 9/16"
E4562	Ø 48,3 x 2,0 mm 1 7/8" dia. X 5/64"	Ø 94 mm 3 45/64" dia.	84 mm 3 5/16"	70 mm 2 3/4"
E4563	Ø 60,3 x 2,0 mm 2 3/8" dia. X 5/64"	Ø 115 mm 4 17/32" dia.	93 mm 3 21/32"	90 mm 3 9/16"

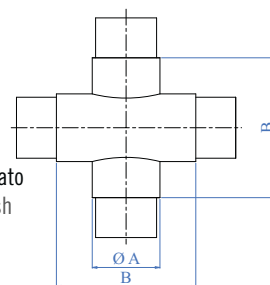
CONNETTORI PER TUBO  
TUBE FITTINGS

Giunzione snodata, satinata  
Pivotable connector, satin finish



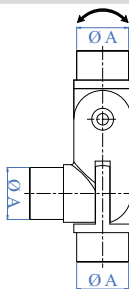
AISI304	AISI316	Per tubo For tube	A	B	C
–	E4464	Ø 33,7 x 2,0 mm 1 1/3" dia. X 5/64"	22 mm 55/64"	43 mm 1 11/16"	
E446/38	–	Ø 38,1 x 1,5 mm 1 1/2" dia. X 1/16"	22 mm 55/64"	43 mm 1 11/16"	
–	E446	Ø 42,4 x 2,0 mm 1 2/3" dia. X 5/64"	22 mm 55/64"	53 mm 2 5/64"	
–	E4462	Ø 48,3 x 2,0 mm 1 7/8" dia. X 5/64"	25 mm 1"	59 mm 2 5/16"	

Raccordo a croce satinato  
4-Way cross, satin finish



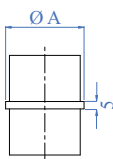
AISI316	Per tubo For tube	A	B
E2046	Ø 33,7 x 2,0 mm 1 1/3" dia. X 5/64"		75 mm 2 61/64"
E2049	Ø 40,0 x 2,0 mm 1 9/16" dia. X 5/64"		87 mm 3 7/16"
E2045	Ø 42,4 x 2,0 mm 1 2/3" dia. X 5/64"		87 mm 3 7/16"
E2047	Ø 48,3 x 2,0 mm 1 7/8" dia. X 5/64"		91 mm 3 37/64"
E2048	Ø 60,3 x 2,0 mm 2 3/8" dia. X 5/64"		109 mm 4 13/32"

Giunzione a doppio snodo  
Multiple joint, pivotable



AISI316	Per tubo For tube	A
E449	Ø 33,7 x 2,0 mm 1 1/3" dia X 5/64"	
E4491	Ø 42,4 x 2,0 mm 1 2/3" dia. X 5/64"	
E4492	Ø 48,3 x 2,0 mm 1 7/8" dia. X 5/64"	

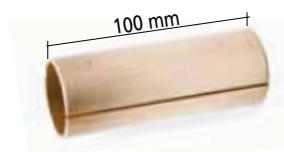
Giunzione satinata per tubi  
Connector, satin finish



AISI304	AISI316	Per tubo For tube	A
–	E2061	Ø 33,7 x 2,0 mm 1 1/3" dia X 5/64"	
E455/38	–	Ø 38,1 x 1,5 mm 1 1/2" dia. X 1/16"	
–	E455	Ø 42,4 x 2,0 mm 1 2/3" dia. X 5/64"	
–	E455/26	Ø 42,4 x 2,6 mm 1 2/3" dia. X 3/32"	
–	E2062	Ø 48,3 x 2,0 mm 1 7/8" dia. X 5/64"	
–	E2063	Ø 60,3 x 2,0 mm 2 3/8" dia. X 5/64"	
–	E20621	Ø 50,8 x 2,0 mm 2" dia. X 5/64"	



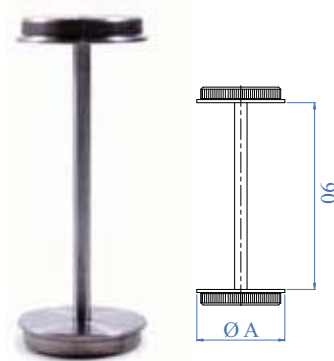
GIUNTURE IN TUBO DI OTTONE  
CONNECTOR



In ottone con fenditura  
In brass, with collar

OTTONE	Per tubo For tube
E024	Ø 42,4 x 2,0 mm 1 2/3" dia. X 5/64"
E0241	Ø 33,7 x 2,0 mm 1 1/3" dia X 5/64"

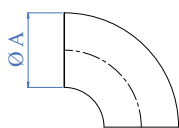
CONNETTORI PIEGHEVOLI PER TUBO  
BENDABLE TUBE CONNECTORS



FACILMENTE PIEGABILE  
EASY TO BEND

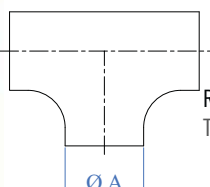
AISI316	Per tubo For tube	A
E455100	Ø 33,7 x 2,0 mm 1 1/3" dia X 5/64"	
E455200	Ø 42,4 x 2,0 mm 1 2/3" dia. X 5/64"	
E455300	Ø 48,3 x 2,0 mm 1 7/8" dia. X 5/64"	

CONNETTORI PER TUBO  
TUBE FITTINGS



Curva 90°, da saldare, grezza  
90° bend, raw, to be welded

AISI304	AISI316	Per tubo For tube	A
E700	—	Ø 21,3 x 1,6 mm 27/32" dia. X 1/16"	
E704	E800	Ø 33,7 x 2,0 mm 1 1/3" dia. X 5/64"	
E706	E802	Ø 42,4 x 2,0 mm 1 2/3" dia. X 5/64"	
E710	—	Ø 60,3 x 2,0 mm 1 3/8" dia. X 5/64"	



Raccordo a T, da saldare, grezzo  
T fitting, raw, to be welded

AISI304	AISI316	Per tubo For tube	A
E721	E821	Ø 33,7 x 2,0 mm 1 1/3" dia. X 5/64"	
E722	E822	Ø 42,4 x 2,0 mm 1 2/3" dia. X 5/64"	



ARTEFERRO





ARTEFERRO

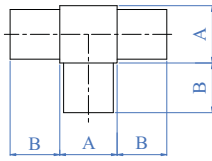


ARTEFERRO



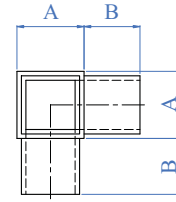
FITTINGS PER TUBO QUADRO  
FITTINGS FOR SQUARE TUBES

Raccordo a "T" per tubo quadro, satinato  
"T" connector, for square tube, satin finish



AISI316	Per tubo For tube	A	B
E4730	20 x 20 x 1,5 mm 25/32" X 25/32" X 5/64"		20 mm 25/32"
E4731	25 x 25 x 2,0 mm 1" x 1" X 5/64"		20 mm 25/32"
E4732	30 x 30 x 2,0 mm 1 3/16" X 1 3/16" X 5/64"		25 mm 1"
E4733	40 x 40 x 2,0 mm 1 9/16" X 1 9/16" X 5/64"		25 mm 1"

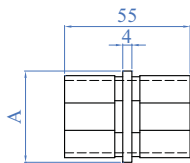
Raccordo d'angolo per tubo quadro, satinato  
3-way corner, for square tube, satin finish



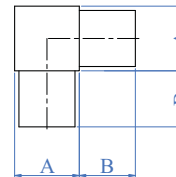
AISI316	Per tubo For tube	A	B
E4720	20 x 20 x 1,5 mm 25/32" X 25/32" X 5/64"		20 mm 25/32"
E4721	25 x 25 x 2,0 mm 1" x 1" X 5/64"		20 mm 25/32"
E4722	30 x 30 x 2,0 mm 1 3/16" X 1 3/16" X 5/64"		25 mm 1"
E4723	40 x 40 x 2,0 mm 1 9/16" X 1 9/16" X 5/64"		25 mm 1"



NEW



Curva a 90° satinata, per tubo quadro  
Elbows 90°, for square tube, satin finish



AISI316	Per tubo For tube	A	B
E4760	40 x 40 x 2,0 mm 1 9/16" X 1 9/16" X 5/64"		

AISI316	Per tubo For tube	A	B
E4710	20 x 20 x 1,5 mm 25/32" X 25/32" X 5/64"		20 mm 25/32"
E4711	25 x 25 x 2,0 mm 1" x 1" X 5/64"		20 mm 25/32"
E4712	30 x 30 x 2,0 mm 1 3/16" X 1 3/16" X 5/64"		25 mm 1"
E4713	40 x 40 x 2,0 mm 1 9/16" X 1 9/16" X 5/64"		25 mm 1"

