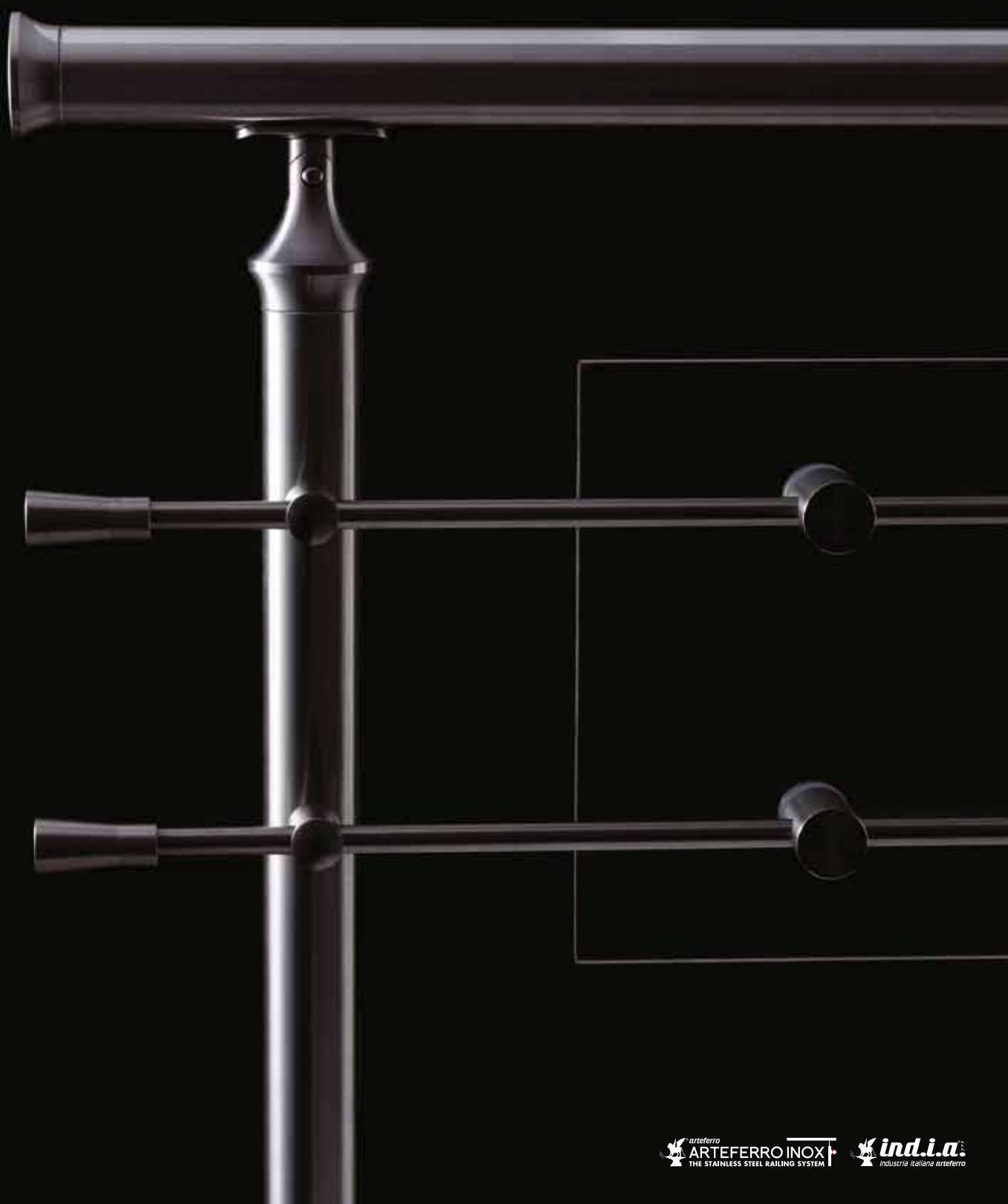


# TAPPI TERMINALI E SFERE - END CAPS SPHERES

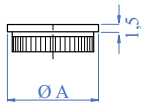
La più vasta gamma di terminali  
è solo ARTEFERRO INOX®

Only ARTEFERRO INOX®  
has the widest range of  
end caps



# • Tappi Terminali e Sfere • End Caps and Spheres

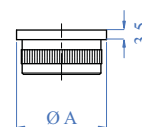
## TAPPI TERMINALI PIANI MASSICCI PER TUBO FLAT, SOLID END CAPS FOR TUBES



Satinati, con zigrinatura  
Satin finish, with knurling



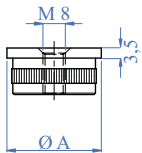
AISI303	Per tubo For tube
E01153	Ø 26,9 x 2,0 mm - 1 7/128" dia. X 5/64"
E0115	Ø 33,7 x 2,0 mm - 1 1/3" dia. X 5/64"
E0115/38	Ø 38,1 x 1,5 mm - 1 1/2" dia. X 1/16"
E01151	Ø 42,4 x 2,0 mm - 1 2/3" dia. X 5/64"
E01152	Ø 48,3 x 2,0 mm - 1 7/8" dia. X 5/64"
E01154	Ø 60,3 x 2,0 mm - 2 3/8" dia. X 5/64"
E01155	Ø 50,8 x 2,0 mm - 2" dia. X 5/64"



Satinati, con zigrinatura  
Satin finish, with knurling



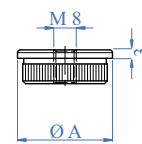
AISI316	Per tubo For tube
E41451	Ø 33,7 x 2,0 mm - 1 1/3" dia. X 5/64"
E4146	Ø 42,4 x 2,0 mm - 1 2/3" dia. X 5/64"
E4147	Ø 42,4 x 2,0 mm - 1 2/3" dia. X 5/64"



Satinati, con zigrinatura e  
foro filettato passante  
Satin finish, with knurling,  
and threaded hole insert



AISI316	Per tubo For tube	Foro filettato Threaded hole
E4148	Ø 33,7 x 2,0 mm - 1 1/3" dia. X 5/64"	M8
E4149	Ø 42,4 x 2,0 mm - 1 2/3" dia. X 5/64"	M8

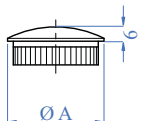


Satinati, con zigrinatura e  
foro filettato passante  
Satin finish, with knurling,  
and threaded hole insert



AISI303	Per tubo For tube	Foro filettato Threaded hole
E01157	Ø 33,7 x 2,0 mm - 1 1/3" dia. X 5/64"	M8
E01158	Ø 42,4 x 2,0 mm - 1 2/3" dia. X 5/64"	M8

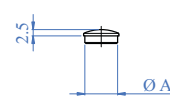
## TAPPI TERMINALI BOMBATI MASSICCI PER TUBO ROUNDED, SOLID END CAPS FOR TUBE



Satinati, con zigrinatura  
Satin finish, with knurling



AISI303	Per tubo For tube	A
E01171	Ø 21,3 x 2,0 mm - 27/32" dia. X 5/64"	
E01172	Ø 26,9 x 2,0 mm - 1 7/128" dia. X 5/64"	
E0117	Ø 33,7 x 2,0 mm - 1 1/3" dia. X 5/64"	
E0119/38	Ø 38,1 x 1,5 mm - 1 1/2" dia. X 1/16"	
E0119	Ø 42,4 x 2,0 mm - 1 2/3" dia. X 5/64"	
E01191	Ø 48,3 x 2,0 mm - 1 7/8" dia. X 5/64"	
E01173	Ø 60,3 x 2,0 mm - 2 3/8" dia. X 5/64"	
E01190	Ø 50,8 x 2,0 mm - 2" dia. X 5/64"	



Satinati, con zigrinatura  
Satin finish, with knurling

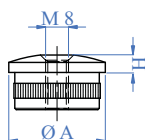


AISI303	AISI316	Per tubo For tube	A
E0118	E0118316	Ø 12,0 x 0,5 mm - 1/2" dia. X 5/256"	
E01181	E01181316	Ø 14,0 x 0,5 mm - 9/16" dia. X 5/256"	
E01182	E01182316	Ø 12,0 x 1,5 mm - 1/2" dia. X 5/64"	
E01183	E01183316	Ø 14,0 x 1,5 mm - 9/16" dia. X 5/64"	

TAPPI TERMINALI BOMBATI MASSICCI PER TUBO  
ROUNDED, SOLID END CAPS FOR TUBE



Satinato con foro filettato e zigrinatura  
With threaded hole and knurling

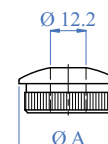


AISI316	Per tubo For tube A	Foro filettato Threaded hole	H
E4143	Ø 33,7 x 2,0 mm 1 1/3" dia. X 5/64"	M8	6 mm 1/4"
E4144	Ø 42,4 x 2,0 mm 1 2/3" dia. X 5/64"	M8	9 mm 11/32"
E011961316	Ø 48,3 x 2,0 mm 1 7/8" dia. X 5/64"	M8	10 mm 3/8"

TERMINALI CON FORO PASSANTE  
END CAPS WITH PASSING HOLES



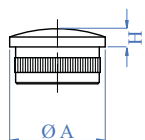
Satinato con foro filettato e zigrinatura  
With threaded hole and knurling



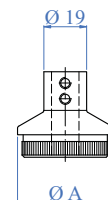
AISI303	AISI316	Per tubo For tube A	Foro passante Through hole
E01195/122	E02195/122	Ø 33,7 x 2,0 mm 1 1/3" dia. X 5/64"	Ø 12,2 mm 31/64" dia.
E01196/122	E02196/122	Ø 42,4 x 2,0 mm 1 2/3" dia. X 5/64"	Ø 12,2 mm 31/64" dia.



Satinati, con zigrinatura, massicci  
Satin finish with knurling



Satinato con foro passante, zigrinatura e 2 grani  
With holes knurling and 2 screw holes

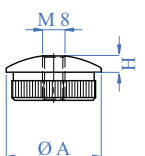


AISI316	Per tubo For tube A	H
E4139	Ø 33,7 x 2,0 mm 1 1/3" dia. X 5/64"	6,5 mm 17/64"
E4141	Ø 42,4 x 2,0 mm 1 2/3" dia. X 5/64"	9 mm 11/32"
E4142	Ø 48,3 x 2,0 mm 1 7/8" dia. X 5/64"	10 mm 3/8"

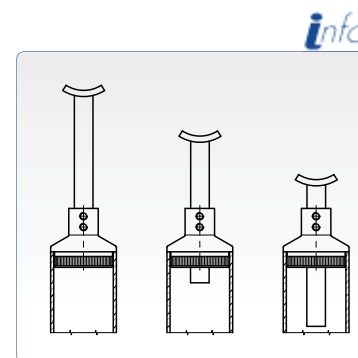
AISI303	AISI316	Per tubo For tube A	Foro passante Through hole
E01195100	E02195100	Ø 33,7 x 2,0 mm 1 1/3" dia. X 5/64"	Ø 12,2 mm 31/64" dia.
E01196100	E02196100	Ø 42,4 x 2,0 mm 1 2/3" dia. X 5/64"	Ø 12,2 mm 31/64" dia.



Satinato con foro filettato e zigrinatura  
With threaded hole and knurling



AISI303	Per tubo For tube A	Foro filettato Threaded hole	H
E01195	Ø 33,7 x 2,0 mm 1 1/3" dia. X 5/64"	M8	6 mm 1/4"
E01196/38	Ø 38,1 x 1,5 mm 1 1/2" dia. X 1/16"	M8	6 mm 1/4"
E01196	Ø 42,4 x 2,0 mm 1 2/3" dia. X 5/64"	M8	7 mm 9/32"
E011961	Ø 48,3 x 2,0 mm 1 7/8" dia. X 5/64"	M8	7 mm 9/32"



# • Tappi Terminali e Sfere • End Caps and Spheres

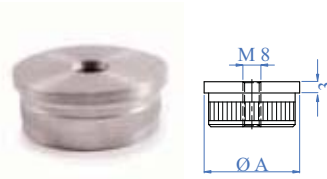
## TAPPI TERMINALI PIATTI VUOTI PER TUBO FLAT, HOLLOW END CAPS FOR TUBE



Satinati, con zigrinatura  
Satin finish, with knurling



AISI316	Per tubo For tube	A
E4100	Ø 42,4 x 2,0 mm - 1 2/3" dia. X 5/64"	

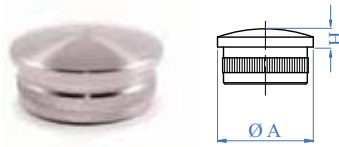


Satinati, con foro filettato  
e zigrinatura  
Satin finish, with theraded  
hole and knurling



AISI316	Per tubo For tube	A	Foro filettato Threaded hole
E4110	Ø 42,4 x 2,0 mm - 1 2/3" dia. X 5/64"		M8

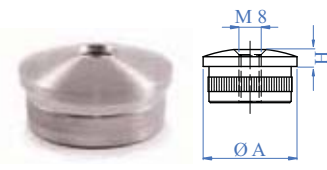
## TAPPI TERMINALI BOMBATI VUOTI PER TUBO ROUNDED, HOLLOW END CAPS FOR TUBE



Satinati, con zigrinatura  
Satin finish, with knurling



AISI316	Per tubo For tube	A	H
E4115	Ø 33,7 x 2,0 mm - 1 1/3" dia. X 5/64"		7 mm - 9/32"
E4120	Ø 42,4 x 2,0 mm - 1 2/3" dia. X 5/64"		9 mm - 11/32"

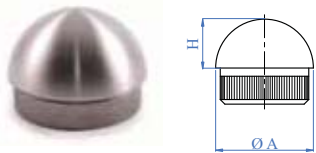


Satinati, con foro filettato  
e zigrinatura  
Satin finish, with theraded  
hole and knurling



AISI316	Per tubo For tube	A	Foro filettato Threaded hole	H
E4116	Ø 33,7 x 2,0 mm - 1 1/3" dia. X 5/64"		M8	5 mm - 3/16"
E4130	Ø 42,4 x 2,0 mm - 1 2/3" dia. X 5/64"		M8	7 mm - 9/32"
E4131	Ø 48,3 x 2,0 mm - 1 7/8" dia. X 5/64"		M8	9 mm - 11/32"

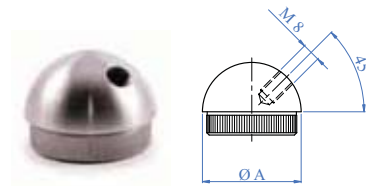
## TAPPI TERMINALI SEMISFERICI SEMISPHERICAL END CAPS



Massicci, satinati con zigrinatura  
Solid, satin finish with knurling



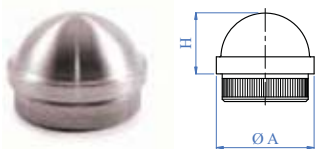
AISI303	AISI316	Per tubo For tube	A	H
E01110	E02110	Ø 26,9 x 2,0 mm - 1 7/128" dia. X 5/64"		14 mm - 9/16"
E01111	E02111	Ø 33,7 x 2,0 mm - 1 1/3" dia. X 5/64"		17 mm - 21/32"
E01112	E02112	Ø 42,4 x 2,0 mm - 1 2/3" dia. X 5/64"		20 mm - 3/4"
E01116	E02116	Ø 48,3 x 2,0 mm - 1 7/8" dia. X 5/64"		20 mm - 3/4"



Massicci, satinati con zigrinatura  
e foro filettato a 45°  
Solid, satin finish with knurling  
at 45°



AISI303	AISI316	Per tubo For tube	A	Foro filettato 45° Threaded hole 45°
E01211	E02211	Ø 33,7 x 2,0 mm - 1 1/3" dia. X 5/64"		M8
E01212	E02212	Ø 42,4 x 2,0 mm - 1 2/3" dia. X 5/64"		M8
E01216	E02216	Ø 48,3 x 2,0 mm - 1 7/8" dia. X 5/64"		M8

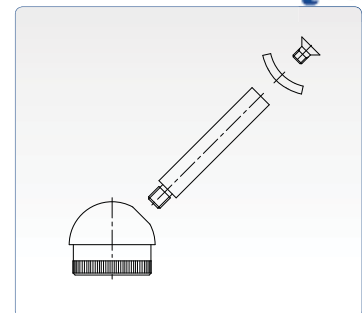


Massicci, satinati con zigrinatura e  
semisfera più piccola  
Solid, satin finish, with knurling  
and smaller semi-sphere



AISI303	AISI316	Per tubo For tube	A	H
E0111	E0111316	Ø 33,7 x 2,0 mm - 1 1/3" dia. X 5/64"		20 mm - 3/4"
E011	E011316	Ø 42,4 x 2,0 mm - 1 2/3" dia. X 5/64"		20 mm - 3/4"

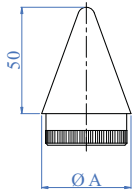
info






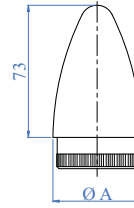
# • Tappi Terminali e Sfere • End Caps and Spheres


## TAPPI TERMINALI SAGOMATI END CAPS WITH VARIOUS SHAPES



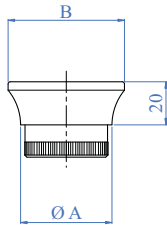
Satinati, con zigrinatura  
Satin finish, with knurling 


AISI303	Per tubo For tube	A
E0119010	Ø 33,7 x 2,0 mm - 1 1/3" dia. x 5/64"	
E0119020	Ø 42,4 x 2,0 mm - 1 2/3" dia. x 5/64"	



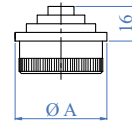
Satinati, con zigrinatura  
Satin finish, with knurling 


AISI303	Per tubo For tube	A
E0119110	Ø 33,7 x 2,0 mm - 1 1/3" dia. x 5/64"	
E0119120	Ø 42,4 x 2,0 mm - 1 2/3" dia. x 5/64"	



Satinati, con zigrinatura  
Satin finish, with knurling 

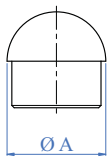
AISI303	Per tubo For tube	A	B
E0119210	Ø 33,7 x 2,0 mm - 1 1/3" dia. x 5/64"		44 mm - 1 11/16"
E0119220	Ø 42,4 x 2,0 mm - 1 2/3" dia. x 5/64"		54 mm - 2 1/8"



Satinati, con zigrinatura  
Satin finish, with knurling 

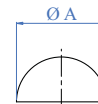
AISI303	Per tubo For tube	A
E0119310	Ø 33,7 x 2,0 mm - 1 1/3" dia. x 5/64"	
E0119320	Ø 42,4 x 2,0 mm - 1 2/3" dia. x 5/64"	


## TAPPI TERMINALI SEMISFERICI SEMI-SPHERICAL END CAPS



Vuoto, satinato  
Hollow, satin finish 


AISI316	Per tubo For tube	A
E464	Ø 33,7 x 2,0 mm - 1 1/3" dia. x 5/64"	
E464/26	Ø 33,7 x 2,6 mm - 1 1/3" dia. x 3/32"	
E465	Ø 42,4 x 2,0 mm - 1 2/3" dia. x 5/64"	
E465/26	Ø 42,4 x 2,6 mm - 1 2/3" dia. x 3/32"	
E466	Ø 48,3 x 2,0 mm - 1 7/8" dia. x 5/64"	
E466/26	Ø 48,3 x 2,6 mm - 1 7/8" dia. x 3/32"	
E467	Ø 60,3 x 2,0 mm - 2 3/8" dia. x 5/64"	
E467/26	Ø 60,3 x 2,6 mm - 2 3/8" dia. x 3/32"	
E468	Ø 50,8 x 2,0 mm - 2" dia. x 5/64"	

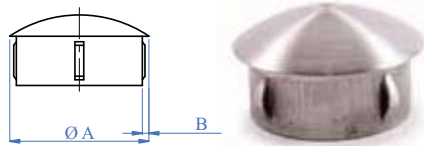


Grezze, spessore 1,5 mm  
Unfinished, thickness 1/16"  

AISI304	Diametro Diameter	A
E040	Ø 33,7 mm - 1 1/3" dia.	
E041	Ø 42,4 mm - 1 2/3" dia.	
E042	Ø 48,3 mm - 1 7/8" dia.	

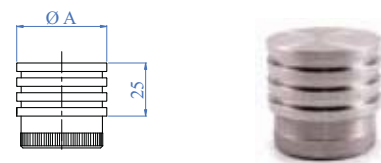
TAPPI TERMINALI A PRESSIONE PER TUBO  
PRESSURE LOCKED END CAPS

 Bombato. Vuoto a pressione  
Rounded pressure, locked




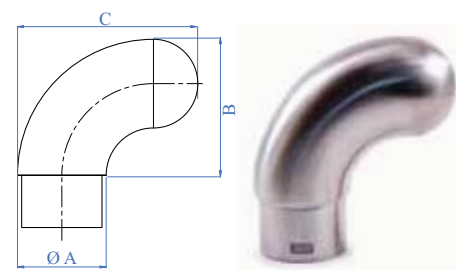
AISI316	Per tubo For tube A	Spessore tubo Tube thickness B
E4094	Ø 101,6 mm - 4" dia.	2,0 - 2,6 mm - 5/64" - 3/32"
E4093	Ø 76,1 mm - 3" dia.	2,0 - 2,6 mm - 5/64" - 3/32"
E4092	Ø 60,3 mm - 2 3/8" dia.	2,0 - 2,6 mm - 5/64" - 3/32"
E40957	Ø 40,0 mm - 1 9/16" dia.	1,5 - 3,0 mm - 1/16" - 1/8"
E40955	Ø 30,0 mm - 1 3/16" dia.	1,5 - 3,0 mm - 1/16" - 1/8"
E40954	Ø 26,9 mm - 1 7/128" dia.	1,6 - 2,6 mm - 1/16" - 3/32"
E40953	Ø 21,3 mm - 27/32" dia.	1,6 - 2,6 mm - 1/16" - 3/32"
E40952	Ø 20,0 mm - 25/32" dia.	1,0 - 2,0 mm - 3/64" - 5/64"
E40951	Ø 16,0 mm - 5/8" dia.	1,0 - 2,0 mm - 3/64" - 5/64"
E40950	Ø 12,0 mm - 1/2" dia.	1,0 mm - 3/64"

TAPPI TERMINALI SAGOMATI  
END CAPS WITH VARIOUS SHAPES

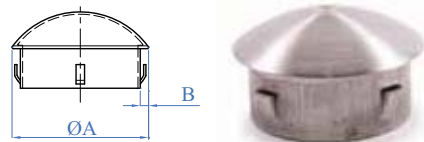


AISI303	Per tubo For tube A
E0119410	Ø 33,7 x 2,0 mm - 1 1/3" dia. x 5/64"
E0119420	Ø 42,4 x 2,0 mm - 1 2/3" dia. x 5/64"

 Curvato 90°, satinato,  
bombato  
Bent 90°, rounded, satin  
finish




 Bombato. Vuoto a pressione  
**NEW** Rounded pressure, locked

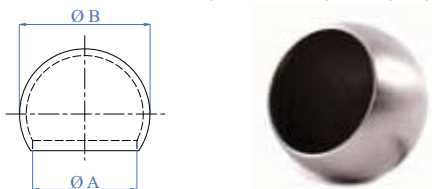


AISI316	Per tubo For tube A	Spessore tubo Tube thickness B
E316	Ø 42,4 mm - 1 2/3" dia.	1,5 - 2,6 mm - 1/16" - 3/32"
E315	Ø 33,7 mm - 1 1/3" dia.	1,5 - 2,6 mm - 1/16" - 3/32"
E317	Ø 48,3 - 1 7/8" dia.	1,5 - 2,6 mm - 1/16" - 3/32"

AISI316	Per tubo For tube A	B x C
E480	Ø 33,7 x 2,0 mm - 1 1/3" dia. x 5/64"	70 x 57 mm - 2 3/4" x 2 1/4"
E481	Ø 42,4 x 2,0 mm - 1 2/3" dia. x 5/64"	80 x 60 mm - 3 1/8" x 2 23/64"
E482	Ø 48,3 x 2,0 mm - 1 7/8" dia. x 5/64"	100 x 75 mm - 3 15/16" x 2 15/16"
E483	Ø 60,3 x 2,0 mm - 2 3/8" dia. x 5/64"	115 x 85 mm - 4 1/2" x 3 11/32"

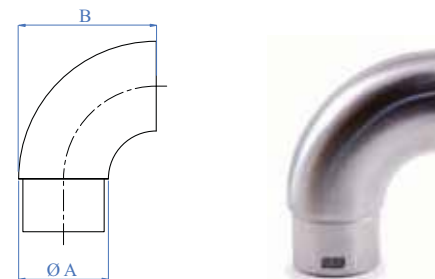
TAPPI TERMINALI A SORMONTO  
OVERLAPPING END CAPS

 Terminale esterno  
Overlapping end cap



AISI316	Per tubo For tube A	B
E460	Ø 33,7 mm - 1 1/3" dia.	Ø 48 mm - 1 7/8" dia.
E461	Ø 42,4 mm - 1 2/3" dia.	Ø 55 mm - 2 1/8" dia.
E462	Ø 48,3 mm - 1 7/8" dia.	Ø 64 mm - 2 33/64" dia.
E463	Ø 60,3 mm - 2 3/8" dia.	Ø 78 mm - 3 1/16" dia.
E469	Ø 50,8 mm - 2" dia.	Ø 64 mm - 2 33/64" dia.

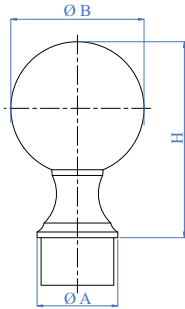
 Curvato 90°, satinato,  
piatto  
Bent 90°, flat, satin  
finish



AISI316	Per tubo For tube A	B
E2021	Ø 33,7 x 2,0 mm - 1 1/3" dia. x 5/64"	55 mm - 2 1/8"
E452	Ø 42,4 x 2,0 mm - 1 2/3" dia. x 5/64"	55 mm - 2 1/8"

# • Tappi Terminali e Sfere • End Caps and Spheres

## TAPPI TERMINALI SAGOMATI END CAPS WITH VARIOUS SHAPES

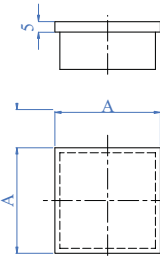


Con pomolo satinato  
Knob, satin finish



AISI316	Per tubo For tube	A	B	H
E457	Ø 42,4 x 2,0 mm 1 2/3" dia. x 5/64"	Ø 70 mm 2 3/4" dia.	103 mm 4 1/6"	
E4571	Ø 48,3 x 2,0 mm 1 7/8" dia. x 5/64"	Ø 80 mm 3 5/32" dia.	115 mm 4 1/2"	
E4572	Ø 50,8 mm x 2,0 mm 2" dia. x 5/64"	Ø 80 mm 3 5/32" dia.	120 mm 4 3/4"	

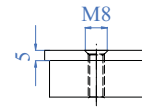
## TAPPI TERMINALI PER TUBO QUADRO END CAPS FOR SQUARE TUBES



Per tubo quadro, satinato  
For square tube, satin finish



AISI316	Per tubo For tube	A x A
E4200	20 x 20 x 2,0 mm - 25/32" X 25/32" X 1/16"	
E4210	25 x 25 x 2,0 mm - 1" x 1" x 5/64"	
E4220	30 x 30 x 2,0 mm - 1 3/16" X 1 3/16" X 5/64"	
E4230	40 x 40 x 2,0 mm - 1 9/16" X 1 9/16" X 5/64"	
E4240	50 x 50 x 2,0 mm - 2" x 2" x 5/64"	
E4250	60 x 60 x 2,0 mm - 2 23/64" X 1 9/16" X 5/64"	



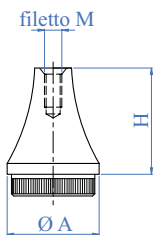
Per tubo quadro, satinato con  
foro filettato  
For square tube, satin finish,  
with threaded hole

NEW



AISI316	Per tubo For tube	A x A
E42201	30 x 30 x 2,0 mm - 1 3/16" X 1 3/16" X 5/64"	
E42301	40 x 40 x 2,0 mm - 1 9/16" X 1 9/16" X 5/64"	

## TAPPI TERMINALI END CAPS

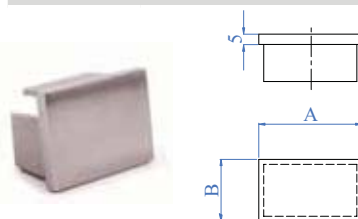


(Da combinare alla sfera con  
foro filettato)  
(To be combined with spheres)

A punta con foro cieco  
filettato e zigrinatura  
With knurling, pointed with  
internal threaded blind hole



AISI303	Per tubo For tube	A	H	Filetto M Thread M
E0101	Ø 33,7 x 2,0 mm - 1 1/3" dia. x 5/64"	30 mm - 1 3/16"	M8	
E010	Ø 42,4 x 2,0 mm - 1 2/3" dia. x 5/64"	47 mm - 1 13/16"	M10	



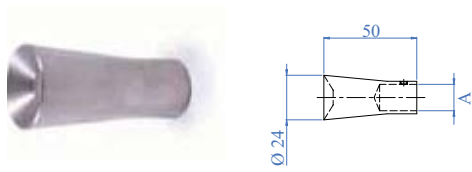
AISI316	Per tubo For tube	A x B
E4251	30 x 20 x 2,0 mm - 1 3/16" X 25/32" X 5/64"	
E4252	40 x 20 x 2,0 mm - 1 9/16" X 25/32" X 5/64"	
E4253	40 x 30 x 2,0 mm - 1 9/16" X 1 3/16" X 5/64"	
E4254	50 x 30 x 2,0 mm - 2" x 1 3/16" X 5/64"	
E4255	60 x 40 x 2,0 mm - 2 23/64" X 1 9/16" X 5/64"	



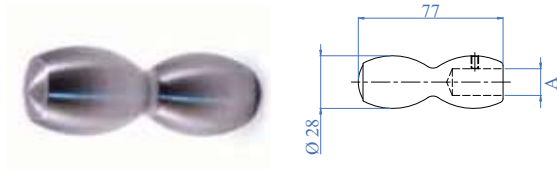


# • Tappi Terminali e Sfere • End Caps and Spheres

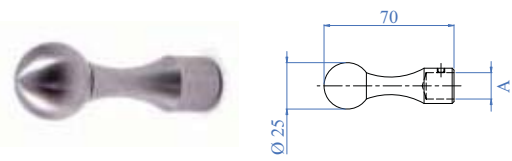
## TAPPI TERMINALI PER TONDINO END CAPS FOR ROUND BARS



<b>AISI303</b>	Per tondino For round bar A
E910510	Ø 12 mm - 1/2" dia.
E9105	Ø 14 mm - 9/16" dia.



<b>AISI303</b>	Per tondino For round bar A
E911010	Ø 12 mm - 1/2" dia.
E9110	Ø 14 mm - 9/16" dia.



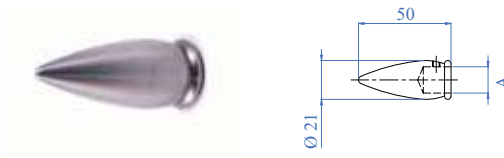
<b>AISI303</b>	Per tondino For round bar A
E912010	Ø 12 mm - 1/2" dia.
E9120	Ø 14 mm - 9/16" dia.



<b>AISI303</b>	Per tondino For round bar A
E911510	Ø 12 mm - 1/2" dia.
E9115	Ø 14 mm - 9/16" dia.

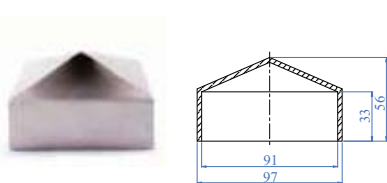


<b>AISI303</b>	Per tondino For round bar A
E912510	Ø 12 mm - 1/2" dia.
E9125	Ø 14 mm - 9/16" dia.



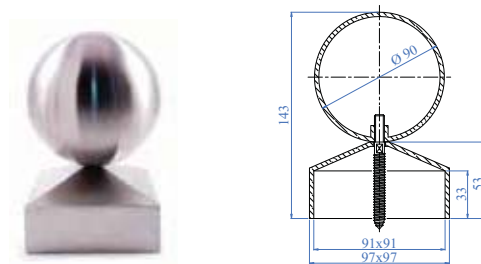
<b>AISI303</b>	Per tondino For round bar A
E913010	Ø 12 mm - 1/2" dia.
E9130	Ø 14 mm - 9/16" dia.

## COPRIPILASTRI PILLAR COVERS



Per tubo quadro, satinato  
For square tube, satin finish


<b>AISI316</b>	Per tubo For tube
E4165	90 x 90 mm - 3 9/16" x 3 9/16"



Satinato  
Satin finish

<b>AISI316</b>	Per tubo For tube
E4160	90 x 90 mm - 3 9/16" x 3 9/16"

TAPPI TERMINALI A PIRAMIDE  
PYRAMID SHAPE POST CAPS

 Per tubo quadro  
For square tube







AISI304	Dimensioni Dimensions	A x A	Superficie Surface
E039	30 x 30 mm - 1 3/16" x 1 3/16"		grezzo - raw
E0391	40 x 40 mm - 1 9/16" x 1 9/16"		grezzo - raw
E0392	50 x 50 mm - 2" x 2"		grezzo - raw
E0393	60 x 60 mm - 2 23/64" x 2 23/64"		grezzo - raw
E0394	80 x 80 mm - 3 5/32" x 3 5/32"		grezzo - raw
E0395	100 x 100 mm - 3 15/16" x 3 15/16"		grezzo - raw
E0396	120 x 120 mm - 4 23/32" x 4 23/32"		grezzo - raw
E0397	150 x 150 mm - 5 29/32" x 5 29/32"		grezzo - raw

AISI316	Dimensioni Dimensions	A x A	Superficie Surface
E4150	30 x 30 mm - 1 3/16" x 1 3/16"		satinato - satin finish
E4151	40 x 40 mm - 1 9/16" x 1 9/16"		satinato - satin finish
E4152	50 x 50 mm - 2" x 2"		satinato - satin finish
E4153	60 x 60 mm - 2 23/64" x 2 23/64"		satinato - satin finish
E4154	80 x 80 mm - 3 5/32" x 3 5/32"		satinato - satin finish
E4155	100 x 100 mm - 3 15/16" x 3 15/16"		satinato - satin finish

SFERE VUOTE  
HOLLOW SPHERES

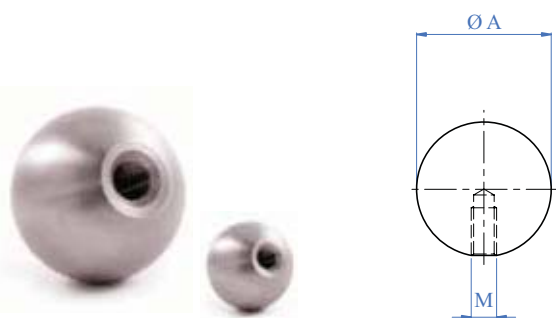
Sfere vuote con foro filettato,  
satinato  
Hollow spheres, with threaded  
inserts, satin finish



AISI304	AISI316	Dimensioni Dimensions	Superficie Surface	Filetto Thread
-	E0701	Ø 30 mm 1 3/16" dia.	satinato satin finish	M6
-	E0702	Ø 40 mm 1 9/16" dia.	satinato satin finish	M6
-	E070	Ø 50 mm 2" dia.	satinato satin finish	M6
-	E071	Ø 60 mm 2 23/64" dia.	satinato satin finish	M8
E072304	E072	Ø 70 mm 2 3/4" dia.	satinato satin finish	M8
-	E073	Ø 80 mm 3 5/32" dia.	satinato satin finish	M8
-	E074	Ø 90 mm 3 9/16" dia.	satinato satin finish	M8
E075304	E075	Ø 100 mm 3 15/16" dia.	satinato satin finish	M10
-	E076	Ø 120 mm 4 3/4" dia.	satinato satin finish	M10
-	E077	Ø 150 mm 5 29/32" dia.	satinato satin finish	M10
-	E078	Ø 200 mm 7 7/8" dia.	satinato satin finish	M10

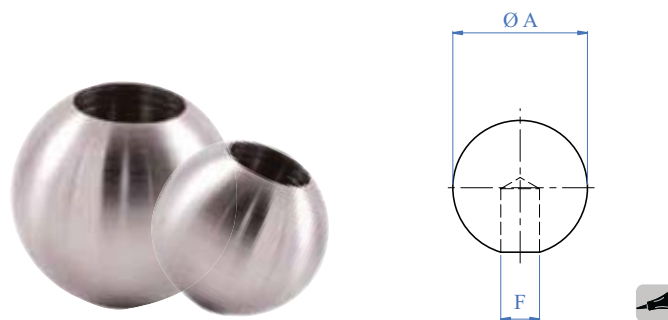
AISI304	Dimensioni Dimensions	Superficie Surface	Filetto Thread
E0701/GO	Ø 30 mm - 1 3/16" dia.	dorato - gold plated	M6
E0701/HP	Ø 30 mm - 1 3/16" dia.	lucido - mirror polished	M6
E0702/GO	Ø 40 mm - 1 9/16" dia.	dorato - gold plated	M6
E0702/HP	Ø 40 mm - 1 9/16" dia.	lucido - mirror polished	M6
E070/GO	Ø 50 mm - 2" dia.	dorato - gold plated	M6
E070/HP	Ø 50 mm - 2" dia.	lucido - mirror polished	M6
E071/GO	Ø 60 mm - 2 23/64" dia.	dorato - gold plated	M8
E071/HP	Ø 60 mm - 2 23/64" dia.	lucido - mirror polished	M8
E072/HP	Ø 70 mm - 2 3/4" dia.	lucido - mirror polished	M8
E073/GO	Ø 80 mm - 3 5/32" dia.	dorato - gold plated	M8
E073/HP	Ø 80 mm - 3 5/32" dia.	lucido - mirror polished	M8
E074/HP	Ø 90 mm - 3 9/16" dia.	lucido - mirror polished	M8
E075/GO	Ø 100 mm - 3 15/16" dia.	dorato - gold plated	M10
E075/HP	Ø 100 mm - 3 15/16" dia.	lucido - mirror polished	M10
E076/GO	Ø 120 mm - 4 3/4" dia.	dorato - gold plated	M10
E076/HP	Ø 120 mm - 4 3/4" dia.	lucido - mirror polished	M10

SFERE PIENE FILETTATE  
SOLID SPHERES WITH THREADED INSERTS



AISI304	AISI316	Dimensioni Dimensions A	Filetto Thread M
E012	E4300	Ø 60 mm foro cieco filettato 2 23/64" dia. threaded blind hole	M10
E01201	–	Ø 55 mm foro cieco filettato 2 11/64" dia. threaded blind hole	M10
E0120	E4301	Ø 50 mm foro cieco filettato 2" dia. threaded blind hole	M8
E0121	E4302	Ø 40 mm foro cieco filettato 1 9/16" dia. threaded blind hole	M8
E0122	–	Ø 30 mm foro cieco filettato 1 3/16" dia. threaded blind hole	M6
E0123	–	Ø 25 mm foro cieco filettato 1" dia. threaded blind hole	M6
E0124	–	Ø 20 mm foro cieco filettato 25/32" dia. threaded blind hole	M6
E0125	–	Ø 15 mm foro cieco filettato 19/32" dia. threaded blind hole	M6

SFERE PIENE CON FORO  
SOLID SPHERES WITH HOLES



AISI304	AISI316	Dimensioni Dimensions A	Foro Hole F
E0126	E4307	Ø 20 mm foro cieco 25/32" dia. blind hole	Ø 10,2 mm 13/32" dia.
E01261	–	Ø 20 mm foro cieco 25/32" dia. blind hole	Ø 12,2 mm 1/2" dia.
E01262	–	Ø 20 mm foro passante 25/32" dia. hole	Ø 10,2 mm 13/32" dia.
E01292	–	Ø 25 mm foro cieco 1" dia. blind hole	Ø 10,2 mm 13/32" dia.
E0127	E4308	Ø 25 mm foro cieco 1" dia. blind hole	Ø 12,2 mm 1/2" dia.
E0128	E4309	Ø 25 mm foro cieco 1" dia. blind hole	Ø 14,2 mm 9/16" dia.
E0129	E4311	Ø 25 mm foro passante 1" dia. hole	Ø 12,2 mm 1/2" dia.
E01281	E4312	Ø 25 mm foro passante 1" dia. hole	Ø 14,2 mm 9/16" dia.
E01302	–	Ø 30 mm foro cieco 1 3/16" dia. blind hole	Ø 12,2 mm 1/2" dia.
E01300	E4313	Ø 30 mm foro passante 1 3/16" dia. hole	Ø 10,2 mm 13/32" dia.
E0130	E4314	Ø 30 mm foro passante 1 3/16" dia. hole	Ø 12,2 mm 1/2" dia.
E01301	E4315	Ø 30 mm foro passante 1 3/16" dia. hole	Ø 14,2 mm 9/16" dia.
E0130/S0	–	Ø 30 mm foro passante con grano laterale 1 3/16" dia. hole with set screw	Ø 12,2 mm 1/2" dia.
E01301/S0	–	Ø 30 mm foro passante con grano laterale 1 3/16" dia. hole with set screw	Ø 14,2 mm 9/16" dia.



ARTEFERRO