

CUBE SYSTEM

Per architettura moderna è la
soluzione più bella

It is the most beautiful solution for
a modern Architecture



CUBE SYSTEM

TUBI QUADRATI SQUARE TUBES

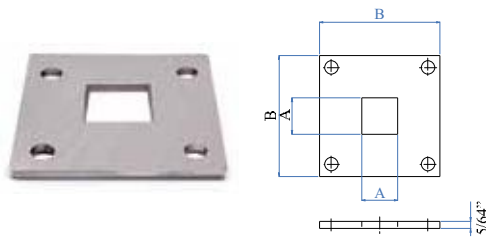


In acciaio inossidabile satinato con grana 240, imbastato individualmente
Stainless steel, satin finish, with grain size 240, individually packed

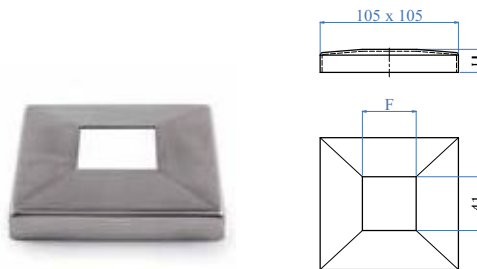
AISI304	AISI316	Dimensioni Dimensions
E00152020	E10152020	20 x 20 x 1,5 x 3000 mm 25/32" X 25/32" X 1/16" X 9' - 10"
E06152020	E16152020	20 x 20 x 1,5 x 6000 mm 25/32" X 25/32" X 1/16" X 19' - 8"
E00202525	E10202525	25 x 25 x 2,0 x 3000 mm 1" X 1" X 5/64" X 9' - 10"
E06202525	E16202525	25 x 25 x 2,0 x 6000 mm 1" X 1" X 5/64" X 19' - 8"
E00203030	E10203030	30 x 30 x 2,0 x 3000 mm 1 3/16" X 1 3/16" X 5/64" X 9' - 10"
E06203030	E16203030	30 x 30 x 2,0 x 6000 mm 1 3/16" X 1 3/16" X 5/64" X 19' - 8"
E00204040	E10204040	40 x 40 x 2,0 x 3000 mm 1 9/16" X 1 9/16" X 5/64" X 9' - 10"
E06204040	E16204040	40 x 40 x 2,0 x 6000 mm 1 9/16" X 1 9/16" X 5/64" X 19' - 8"
E00205050	E10205050	50 x 50 x 2,0 x 3000 mm 2" X 2" X 5/64" X 9' - 10"
E06205050	E16205050	50 x 50 x 2,0 x 6000 mm 2" X 2" X 5/64" X 19' - 8"
E00206060	E10206060	60 x 60 x 2,0 x 3000 mm 2 3/8" X 2 3/8" X 5/64" X 9' - 10"
E06206060	E16206060	60 x 60 x 2,0 x 6000 mm 2 3/8" X 2 3/8" X 5/64" X 19' - 8"
-	E10203020	30 x 20 x 2,0 x 3000 mm 1 3/16" X 25/32" X 5/64" X 9' - 10"
-	E16203020	30 x 20 x 2,0 x 6000 mm 1 3/16" X 25/32" X 5/64" X 19' - 8"
-	E10204020	40 x 20 x 2,0 x 3000 mm 1 9/16" X 25/32" X 5/64" X 9' - 10"
-	E16204020	40 x 20 x 2,0 x 6000 mm 1 9/16" X 25/32" X 5/64" X 19' - 8"
-	E10204030	40 x 30 x 2,0 x 3000 mm 1 9/16" X 1 3/16" X 5/64" X 9' - 10"
-	E16204030	40 x 30 x 2,0 x 6000 mm 1 9/16" X 1 3/16" X 5/64" X 19' - 8"
-	E10205030	50 x 30 x 2,0 x 3000 mm 2" X 1 3/16" X 5/64" X 9' - 10"
-	E16205030	50 x 30 x 2,0 x 6000 mm 2" X 1 3/16" X 5/64" X 19' - 8"
-	E10206040	60 x 40 x 2,0 x 3000 mm 2 3/8" X 1 9/16" X 5/64" X 9' - 10"
-	E16206040	60 x 40 x 2,0 x 6000 mm 2 3/8" X 1 9/16" X 5/64" X 19' - 8"



ARTEFERRO

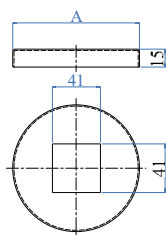


AISI304	AISI316	Per tubo For tube	Dimensioni Dimensions	Fori esterni External holes
E02050	E02050316	40 x 40 mm 1 9/16" X 1 9/16"	100 x 100 mm 3 15/16" X 3 15/16"	4 x Ø 11 mm 4 x 7/16" dia.



AISI316	Dimensioni Dimensions	Foro Hole	Altezza Height
E02052316	105 x 105 mm 4 1/8" X 4 1/8"	41 x 41 mm 1 39/64" X 1 39/64"	15 mm 19/32"

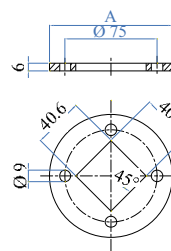
COPRIFLANGIA PER ANCORAGGIO MONTANTE A PIATTI
FLANGE COVER FOR SQUARE TUBE NEWEL POST



NEW

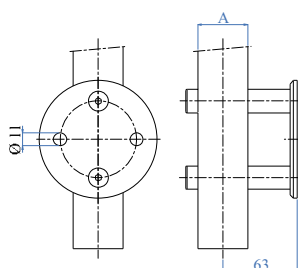
AISI304	AISI316	Dimensioni Dimensions	Foro Hole	Altezza Height
E02051	E02051316	Ø 105 mm 4 9/64" dia.	41 x 41 mm 1 39/64" X 1 39/64"	15 mm 19/32"

ELEMENTI DI ANCORAGGIO
ANCHORAGE ELEMENTS



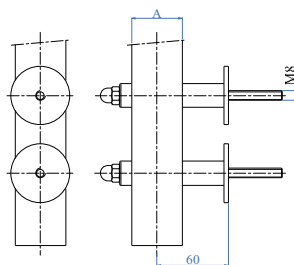
AISI304	AISI316	Dimensioni Dimensions	Foro Hole	Altezza Height
E02053	E02053316	Ø 100 mm 3 15/16" dia.	40,6 x 40,6 mm 1 19/32" X 1 19/32"	6 mm 1/4"

ANCORAGGI LATERALI
LATERAL ANCHORAGES



(C)

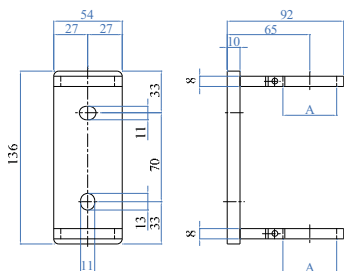
AISI304	AISI316	Per tubo For tube	Superficie piana Flat face
E11440	E11440316	A	



B

(C)

AISI304	AISI316	Per tubo For tube	Superficie piana Flat face
E11340	E11340316	A	

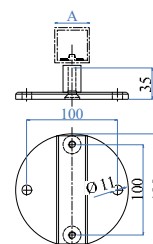


(C)

NEW

AISI316	Per tubo For tube
E116300	40 x 40 mm 1 9/16" X 1 9/16"

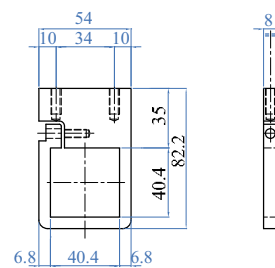
Set composto da: distanziale e piastrina filettata
Complete with flange, spacers and tube plate



NEW

AISI304	AISI316	Per tubo For tube	Disco Disc
E1110	E1110316	Superficie piana Flat face	Ø 100 x 6 mm 3 15/16" dia X 15/64"

ANELLO DI FISSAGGIO
FIXING RING



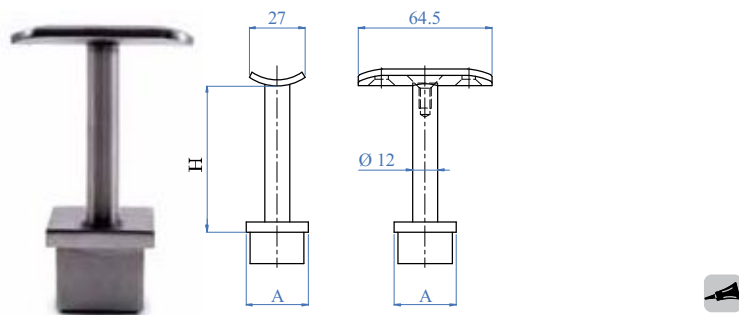
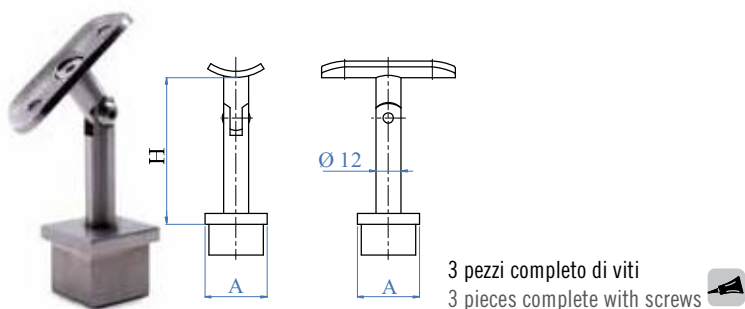
(C)

NEW

AISI316	Per tubo For tube
E117300	40 x 40 mm 1 9/16" X 1 9/16"

• CUBE SYSTEM

REGGICORRIMANO HANDRAIL SUPPORTS



AISI303	AISI316	Altezza Height	H	Per corrimano For handrail	Per tubo quadro For square tube	A
E037100	E037110	75 mm		Ø 33,7 mm	30 x 30 x 2,0 mm	
		2 61/64"		1 1/3" dia.	1 3/16" x 1 3/16" x 5/64"	
E037200	E037210	75 mm		Ø 42,4 mm	40 x 40 x 2,0 mm	
		2 61/64"		1 2/3" dia.	1 9/16" x 1 9/16" x 5/64"	

AISI303	AISI316	Altezza Height	H	Per corrimano For handrail	Per tubo quadro For square tube	A
E037500	E037510	75 mm		Ø 33,7 mm	30 x 30 x 2,0 mm	
		2 61/64"		1 1/3" dia.	1 3/16" x 1 3/16" x 5/64"	
E037600	E037610	75 mm		Ø 42,4 mm	40 x 40 x 2,0 mm	
		2 61/64"		1 2/3" dia.	1 9/16" x 1 9/16" x 5/64"	

PIASTRE SELLA MOUNTING PLATES

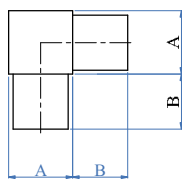


Spessore 4 mm
Thickn. 5/32"

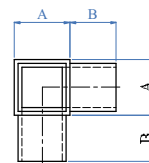
AISI304	AISI316	Per tubo For tube
E011976	E011976316	Superficie piana Flat face



Raccordo a 90° per tubo
quadro, satinato
Elbows 90°, for square tube,
satin finish



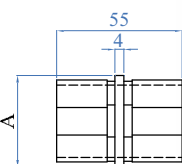
Raccordo d'angolo per tubo
quadro, satinato
3-way corner, for square tube,
satin finish



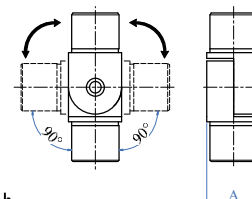
AISI316	Per tubo For tube A	B
E4710	20 x 20 x 1,5 mm 25/32" X 25/32" X 5/64"	20 mm 25/32"
E4711	25 x 25 x 2,0 mm 1" x 1" X 5/64"	20 mm 25/32"
E4712	30 x 30 x 2,0 mm 1 3/16" X 1 3/16" X 5/64"	25 mm 1"
E4713	40 x 40 x 2,0 mm 1 9/16" X 1 9/16" X 5/64"	25 mm 1"

AISI316	Per tubo For tube A	B
E4720	20 x 20 x 1,5 mm 25/32" X 25/32" X 5/64"	20 mm 25/32"
E4721	25 x 25 x 2,0 mm 1" x 1" X 5/64"	20 mm 25/32"
E4722	30 x 30 x 2,0 mm 1 3/16" X 1 3/16" X 5/64"	25 mm 1"
E4723	40 x 40 x 2,0 mm 1 9/16" X 1 9/16" X 5/64"	25 mm 1"

NEW Connettore per tubo quadrato
Titting for square tube



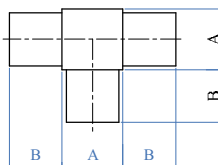
Raccordo snodato per
tubo quadro, satinato
Pivotable connector for
square tube, satin finish



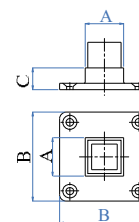
AISI316	Per tubo For tube A
E4760	40 x 40 x 2,0 mm 1 9/16" X 1 9/16" X 5/64"

AISI316	Per tubo For tube A
E4743	40 x 40 x 2,0 mm 1 9/16" X 1 9/16" X 5/64"

Raccordo a "T" per tubo
quadro, satinato
"T" connector, for square
tube, satin finish



Ancoraggio per corrimano
Anchorage for handrail



AISI316	Per tubo For tube A	B
E4730	20 x 20 x 1,5 mm 25/32" X 25/32" X 5/64"	20 mm 25/32"
E4731	25 x 25 x 2,0 mm 1" x 1" X 5/64"	20 mm 25/32"
E4732	30 x 30 x 2,0 mm 1 3/16" X 1 3/16" X 5/64"	25 mm 1"
E4733	40 x 40 x 2,0 mm 1 9/16" X 1 9/16" X 5/64"	25 mm 1"

AISI316	Per tubo For tube A	B	C
E4700	30 x 30 x 2,0 mm 1 3/16" X 1 3/16" X 5/64"	70 mm 2 3/4"	22 mm 55/64"
E4701	40 x 40 x 2,0 mm 1 9/16" X 1 9/16" X 5/64"	80 mm 3 5/32"	18 mm 45/64"
E4702	50 x 50 x 2,0 mm 1 31/32" X 1 31/32" X 5/64"	95 mm 3 47/64"	18 mm 45/64"
E4703	60 x 60 x 2,0 mm 2 23/64" X 2 23/64" X 5/64"	105 mm 4 9/64"	18 mm 45/64"

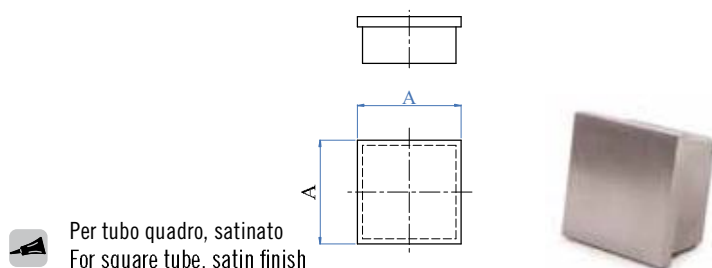


ARTEFERRO

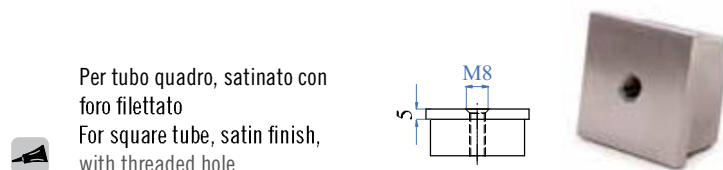


ARTEFERRO

TAPPI TERMINALI PER TUBO QUADRO
END CAPS FOR SQUARE TUBE



Per tubo quadro, satinato
For square tube, satin finish



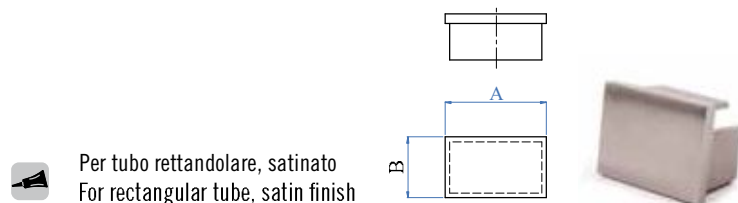
Per tubo quadro, satinato con
foro filettato
For square tube, satin finish,
with threaded hole

AISI316	Per tubo For tube	AxA
E4200	20 x 20 x 1,5 mm - 25/32" X 25/32" X 1/16"	
E4210	25 x 25 x 2,0 mm - 1" x 1" x 5/64"	
E4220	30 x 30 x 2,0 mm - 1 3/16" x 1 3/16" x 5/64"	
E4230	40 x 40 x 2,0 mm - 1 9/16" x 1 9/16" x 5/64"	
E4240	50 x 50 x 2,0 mm - 2" x 2" x 5/64"	
E4250	60 x 60 x 2,0 mm - 2 23/64" x 2 23/64" x 5/64"	

AISI316	Per tubo For tube	A x A
E42201	30 x 30 x 2,0 mm - 1 3/16" x 1 3/16" x 5/64"	
E42301	40 x 40 x 2,0 mm - 1 9/16" x 1 9/16" x 5/64"	



ARTEFERRO



Per tubo rettangolare, satinato
For rectangular tube, satin finish

AISI316	Per tubo For tube	AxB
E4251	30 x 20 x 2,0 mm - 1 3/16" X 25/32" X 5/64"	
E4252	40 x 20 x 2,0 mm - 1 9/16" X 25/32" X 5/64"	
E4253	40 x 30 x 2,0 mm - 1 9/16" x 1 3/16" X 5/64"	
E4254	50 x 30 x 2,0 mm - 2" x 1 3/16" X 5/64"	
E4255	60 x 60 x 2,0 mm - 2 23/64" x 2 23/64" X 5/64"	