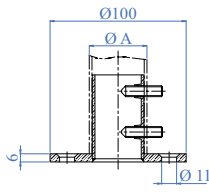


# ELEMENTI DI ANCORAGGIO - ANCHORAGE ELEMENTS

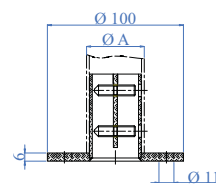
Robusti e Rapidi al montaggio, i sistemi di ancoraggio ARTEFERRO INOX® rispondono a tutte le tue esigenze progettuali ed estetiche

Strong and easy to assemble, the ARTEFERRO INOX® anchorage elements meet all planning and aesthetical needs of the customer

• Elementi di Ancoraggio • Anchorage Elements

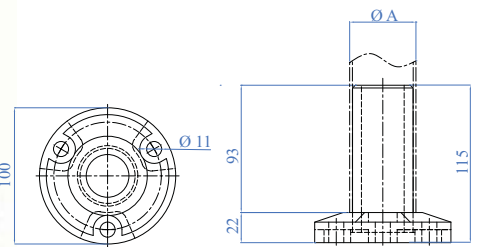
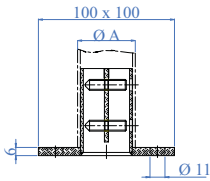


Fori con svassi e  
perimetro bisellato  
Countersunk holes  
and chamfered  
perimeter



AISI304	AISI316	Dimensioni Dimensions	Per tubo For tube A
E0212	E0212316	Ø 100 x 6 mm e 4 fori Ø 11 mm 3 15/16" dia. X 5/64" 4 holes 7/16" dia.	Ø 33,7 x 2,0 mm 1 1/3" dia. X 5/64"
E0213	E0213316	Ø 100 x 6 mm e 4 fori Ø 11 mm 3 15/16" dia. X 5/64" 4 holes 7/16" dia.	Ø 42,4 x 2,0 mm 1 2/3" dia. X 5/64"

AISI304	AISI316	Dimensioni Dimensions	Per tubo For tube A
E403304	E403	Ø 100 x 6 mm e 3 fori Ø 11 mm 3 15/16" dia. X 5/64" 3 holes 7/16" dia.	Ø 42,4 x 2,0 mm 1 2/3" dia. X 5/64"
E0214	E0214316	Ø 100 x 6 mm e 4 fori Ø 11 mm 3 15/16" dia. X 5/64" 4 holes 7/16" dia.	Ø 48,3 x 2,0 mm 1 7/8" dia. X 5/64"

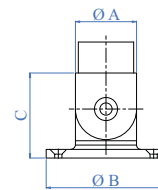


AISI304	AISI316	Dimensioni Dimensions	Per tubo For tube A
E404304	E404	100 x 100 x 6 mm 4 fori Ø 11 mm Square plate 3 15/16" dia. X 5/64" 4 holes 7/16" dia.	Ø 42,4 x 2,0 mm 1 2/3" dia. X 5/64"

AISI316	Per tubo For tube A
E40310	Ø 42,4 x 2,0 mm 1 2/3" dia. X 5/64"
E40310/26	Ø 42,4 x 2,6 mm 1 2/3" dia. X 7/64"
E40320	Ø 48,3 x 2,0 mm 1 7/8" dia. X 5/64"
E40320/26	Ø 48,3 x 2,6 mm 1 7/8" dia. X 7/64"

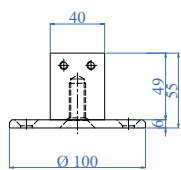


ARTEFERRO

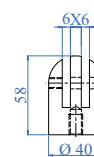


AISI316	Per tubo For tube A	B	C
E448	Ø 21,3 x 2,0 mm 27/32" dia. X 5/64"	Ø 57 mm 2 1/4" dia.	Ø 39 mm 1 17/32"
E4481	Ø 26,9 x 2,0 mm 1 1/16" dia. X 5/64"	Ø 63 mm 2 31/64" dia.	Ø 43 mm 1 11/16"
E4482	Ø 33,7 x 2,0 mm 1 1/3" dia. X 5/64"	Ø 70 mm 2 3/4" dia.	Ø 52 mm 2 3/64"
E4483	Ø 42,4 x 2,0 mm 1 2/3" dia. X 5/64"	Ø 83 mm 3 17/64" dia.	Ø 60 mm 2 23/64"
E4484	Ø 48,3 x 2,0 mm 1 7/8" dia. X 5/64"	Ø 90 mm 3 9/16" dia.	Ø 69 mm 2 23/32"

Ancoraggi per Montanti a Doppio Piatto  
Anchors for Double Plate  
Newel Posts



Ancoraggi per snodati per montanti a doppio piatto  
Anchorage elements for Pivotal Double Plate  
Newel Posts

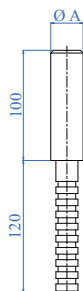


AISI304	AISI316	Dimensioni Dimensions
E021200	E021200316	Disco Ø 100 x 6 mm, 3 fori svasati Ø 11 mm Blocchetto 40 x 49 x 20 mm Disc has 3 15/16" dia. x 15/64" with 3 countersunk holes 7/16" dia. Block cube 1 9/16" x 1 15/16" x 3/4"

AISI304	AISI316	Per rondino For round bar
E021310	E021310316	8 mm 5/16"
E021320	E021320316	10 mm 3/8"
E021330	E021330316	12 mm 1/2"

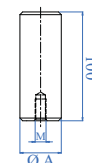
Elemento di Ancoraggio da Cemento  
Concrete Anchor

E013 - E0131 da incementare  
E013 - E0131 to be cemented



Elemento di Sostegno per Tubo  
Support for Anchor Tubes

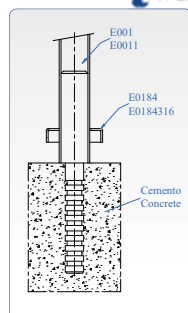
E014 ÷ E0142 da combinare con piastra di ancoraggio E015 ÷ E017  
E014 ÷ 0142 to be combined with anchorage flange E015 ÷ 017



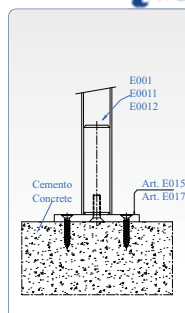
ALUMINIUM	Dimensioni Dimensions	A	Per tubo For tube
E0131	Ø 29,3 mm 1 5/32" dia.		Ø 33,7 x 2,0 mm 1 1/3" dia. x 5/64"
E013	Ø 38,0 mm 1 1/2" dia.		Ø 42,4 x 2,0 mm 1 2/3" dia. x 5/64"

ALUMINIUM	Dimensioni Dimensions	A	Per tubo For tube
E0141	Ø 29,3 mm foro cieco M8 1 5/32" dia. blind hole M8		Ø 33,7 x 2,0 mm 1 1/3" dia. x 5/64"
E014	Ø 38,0 mm foro cieco M10 1 1/2" dia. blind hole M10		Ø 42,4 x 2,0 mm 1 2/3" dia. x 5/64"
E0142	Ø 44 mm - foro cieco M12 1 47/64" dia. blind hole M12		Ø 48,3 x 2,0 mm 1 7/8" dia. x 5/64"

info

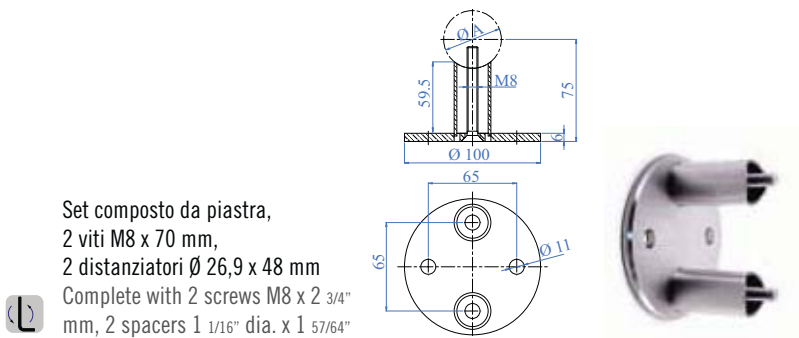
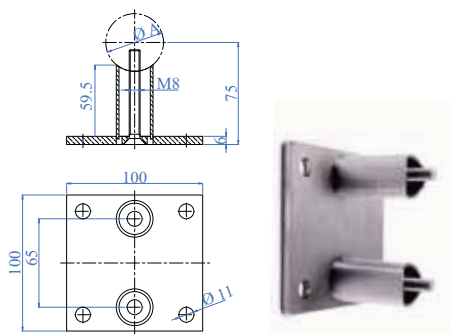


info





ANCORAGGI LATERALI  
LATERAL ANCHORAGES

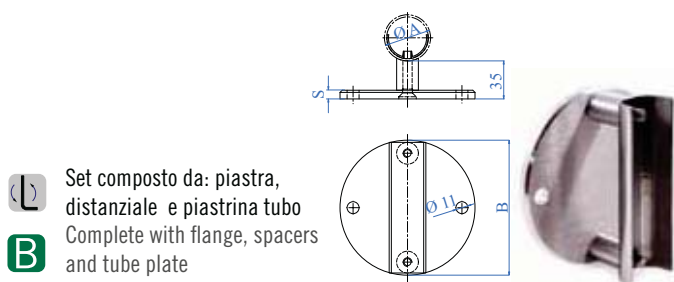


Set composto da piastra,  
2 viti M8 x 70 mm,  
2 distanziatori Ø 26,9 x 48 mm  
Complete with 2 screws M8 x 2 3/4"  
mm, 2 spacers 1 1/16" dia. x 1 57/64"

AISI304	AISI316	Dimensioni Dimensions	Per tubo A For tube
E40110/304	E40110	100 x 100 x 6 mm 3 15/16" x 3 15/16" x 15/64"	Ø 33,7 mm 1 1/3" dia.
E401/304	E401	100 x 100 x 6 mm 3 15/16" x 3 15/16" x 15/64"	Ø 42,4 mm 1 2/3" dia.
E40120/304	E40120	100 x 100 x 6 mm 3 15/16" x 3 15/16" x 15/64"	Superficie piana Flat face

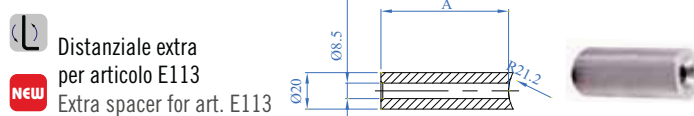
AISI304	AISI316	Dimensioni Dimensions	Per tubo A For tube
E40010/304	E40010	Ø 100 x 6 mm 3 15/16" dia. x 15/64"	Ø 33,7 mm 1 1/3" dia.
E400/304	E400	Ø 100 x 6 mm 3 15/16" dia. x 15/64"	Ø 42,4 mm 1 2/3" dia.
E40020/304	E40020	Ø 100 x 6 mm 3 15/16" dia. x 15/64"	Superficie piana Flat face





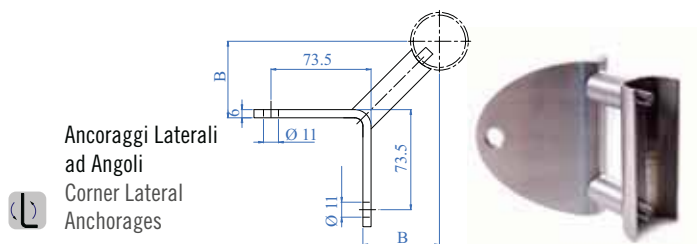
**B** Set composto da: piastra, distanziale e piastrina tubo  
Complete with flange, spacers and tube plate

AISI304	AISI316	Per tubo For tube	B	S
E111	E111316	Ø 42,4 x 2,0 mm 1 2/3" dia. X 5/64"	Ø 125 mm 4 59/64" dia.	8 mm 5/16"
E111/337	E111/337316	Ø 33,7 x 2,0 mm 1 1/3" dia. X 5/64"	Ø 125 mm 4 59/64" dia.	8 mm 5/16"
E111/38	-	Ø 38,1 x 1,5 mm 1 1/2" dia. X 1/16"	Ø 125 mm 4 59/64" dia.	8 mm 5/16"
E113	E113316	Ø 42,4 x 2,0 mm 1 2/3" dia. X 5/64"	Ø 100 mm 3 15/16" dia.	6 mm 15/64"
E113/337	E113/337316	Ø 33,7 x 2,0 mm 1 1/3" dia. X 5/64"	Ø 100 mm 3 15/16" dia.	6 mm 15/64"
E1110	E1110316	Superficie piana Flat face	Ø 100 mm 3 15/16" dia.	6 mm 15/64"



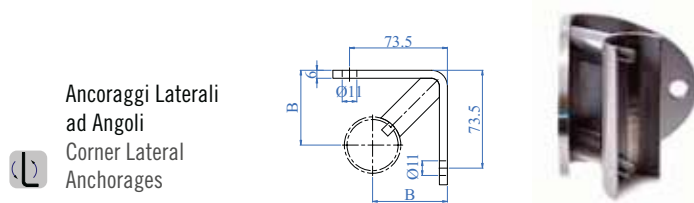
**NEW** Distanziale extra per articolo E113  
Extra spacer for art. E113

AISI304	AISI316	Per tubo For tube	A
E2200/50	E2210/50	Ø 33,7 x 2,0 mm 1 1/3" dia. X 5/64"	50 mm 2"
E2300/50	E2310/50	Ø 42,4 x 2,0 mm 1 2/3" dia. X 5/64"	50 mm 2"
E2400/50	E2410/50	Superficie piana Flat face	50 mm 2"
E2200/70	E2210/70	Ø 33,7 x 2,0 mm 1 1/3" dia. X 5/64"	70 mm 2 3/4"
E2300/70	E2310/70	Ø 42,4 x 2,0 mm 1 2/3" dia. X 5/64"	70 mm 2 3/4"
E2400/70	E2410/70	Superficie piana Flat face	70 mm 2 3/4"



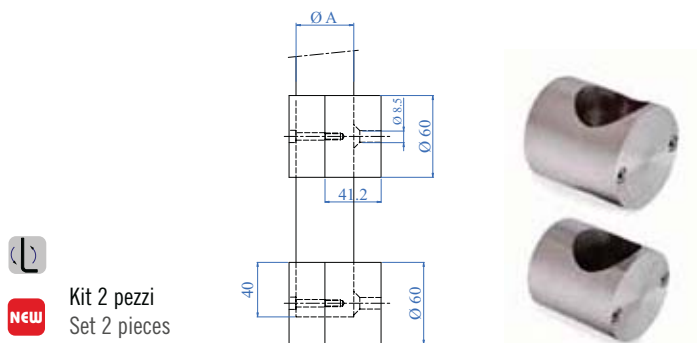
**B** Ancoraggi Lateral ad Angoli  
Corner Lateral Anchorages

AISI304	AISI316	Per tubo For tube	A	B
E1111	E1111316	Ø 33,7 x 2,0 mm 1 1/3" dia. X 5/64"	52 mm 2 3/64"	52 mm 2 3/64"
E1112	E1112316	Ø 42,4 x 2,0 mm 1 2/3" dia. X 5/64"	56 mm 2 3/16"	56 mm 2 3/16"



**B** Ancoraggi Lateral ad Angoli  
Corner Lateral Anchorages

AISI304	AISI316	Per tubo For tube	A	B
E1113	E1113316	Ø 33,7 x 2,0 mm 1 1/3" dia. X 5/64"	52 mm 2 3/64"	52 mm 2 3/64"
E1114	E1114316	Ø 42,4 x 2,0 mm 1 2/3" dia. X 5/64"	56 mm 2 3/16"	56 mm 2 3/16"



**NEW** Kit 2 pezzi  
Set 2 pieces

AISI304	AISI316	Per tubo For tube	A
E118100	E118200	Ø 33,7 mm 1 1/3" dia.	
E118110	E118210	Ø 42,4 mm 1 2/3" dia.	

**info**

I DUE ELEMENTI AUTONOMI POSSONO ESSERE DISTANZIATI A SECONDA DELLE NECESSITÀ  
THE TWO AUTONOMOUS ELEMENTS CAN BE SPACED ACCORDING TO ONE'S NEEDS

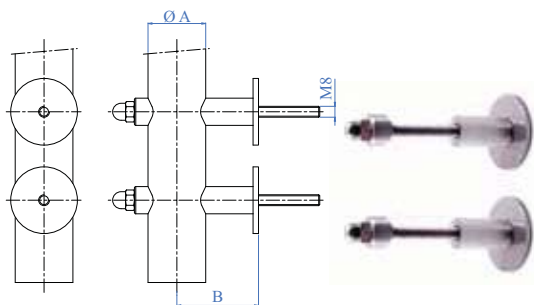




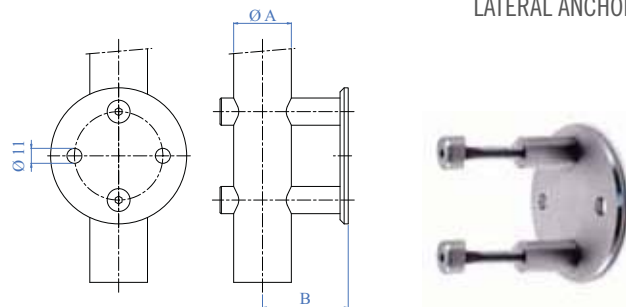
ANCORAGGI LATERALI  
LATERAL ANCHORAGES



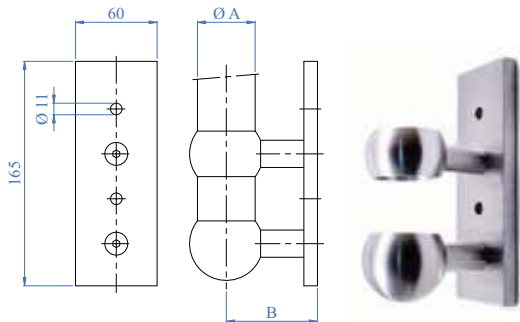
**B** Kit 2 pezzi  
Set 2 pieces



AISI304	AISI316	Per tubo For tube	A	B
E11310	E11310316	Ø 33,7 mm 1 1/3" dia.		55 mm 2 11/64"
E11320	E11320316	Ø 42,4 mm 1 2/3" dia.		60 mm 2 23/64"
E11330	E11330316	Ø 48,3 mm 1 7/8" dia.		63 mm 2 31/64"
E11340	E11340316	Superficie piana Flat face		



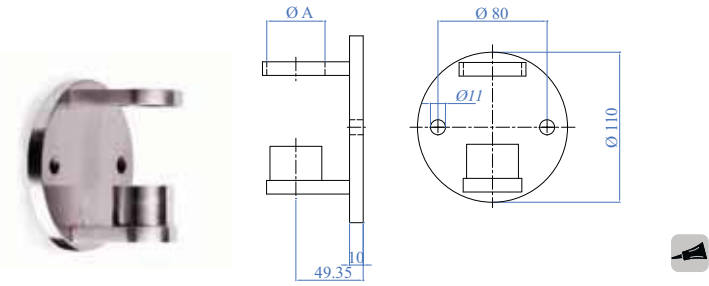
AISI304	AISI316	Per tubo For tube	A	B
E11410	E11410316	Ø 33,7 x 2,0 mm 1 1/3" dia. x 5/64"		58 mm 2 9/32"
E11420	E11420316	Ø 42,4 x 2,0 mm 1 2/3" dia. x 5/64"		63 mm 2 31/64"
E11430	E11430316	Ø 48,3 x 2,0 mm 1 7/8" dia. x 5/64"		66 mm 2 5/8"
E11440	E11440316	Superficie piana Flat face		



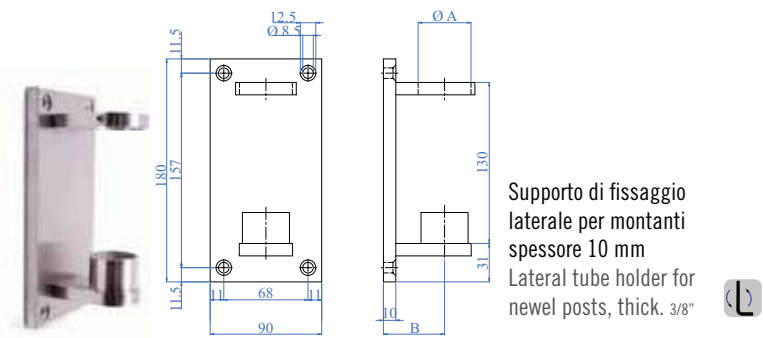
AISI304	AISI316	Per tubo For tube	A	B
E11510	E11510316	Ø 33,7 mm 1 1/3" dia.		62 mm 2 7/16"
E11520	E11520316	Ø 42,4 mm 1 2/3" dia.		67 mm 2 41/64"
E11530	E11530316	Ø 48,3 mm 1 7/8" dia.		70 mm 2 3/4"



• Elementi di Ancoraggio • Anchorage Elements

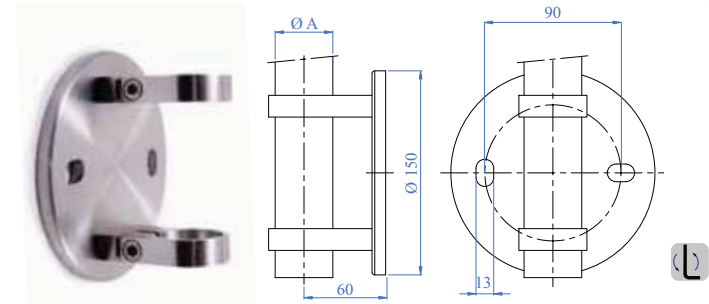


AISI316	Per tubo A For tube
E40350	Ø 42,4 x 2,0 mm 1 2/3" dia. X 5/64"
E40350/26	Ø 42,4 x 2,6 mm 1 2/3" dia. X 7/64"
E40360	Ø 48,3 x 2,0 mm 1 7/8" dia. X 5/64"
E40360/26	Ø 48,3 x 2,6 mm 1 7/8" dia. X 7/64"

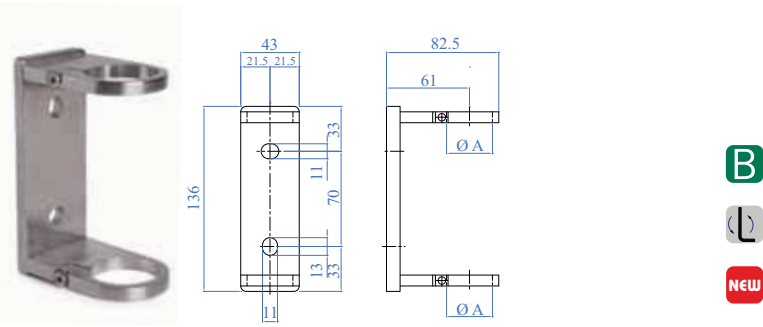


Supporto di fissaggio laterale per montanti spessore 10 mm  
Lateral tube holder for newel posts, thick. 3/8"

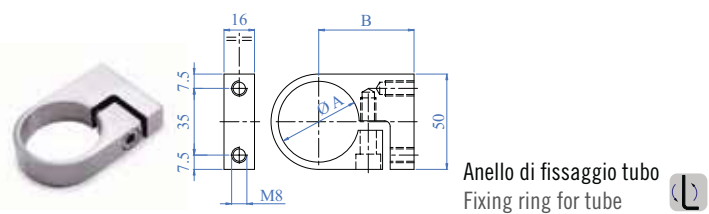
AISI316	Per tubo A For tube	B
E405	Ø 33,7 x 2,0 mm 1 1/3" dia. X 5/64"	45 mm 1 3/4"
E406	Ø 42,4 x 2,0 mm 1 2/3" dia. X 5/64"	49 mm 1 15/16"
E407	Ø 48,3 x 2,0 mm 1 7/8" dia. X 5/64"	57 mm 2 1/4"



AISI304	AISI316	Per tubo A For tube
E116	E116316	Ø 42,4 mm 1 2/3" dia.

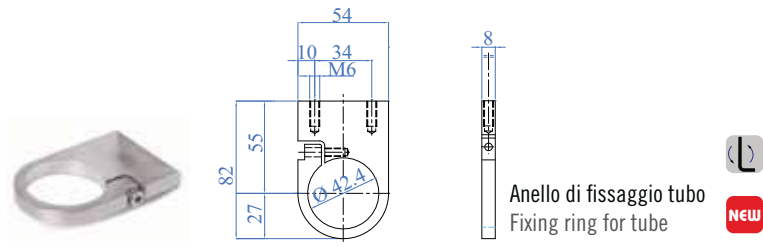


AISI316	Per tubo A For tube
E116100	Ø 33,7 mm 1 1/3" dia.
E116200	Ø 42,4 mm 1 2/3" dia.
E116300	40 x 40 mm 1 9/16" X 1 9/16"



Anello di fissaggio tubo  
Fixing ring for tube

AISI304	Per tubo A For tube
E117	Ø 42,4 mm 1 2/3" dia.

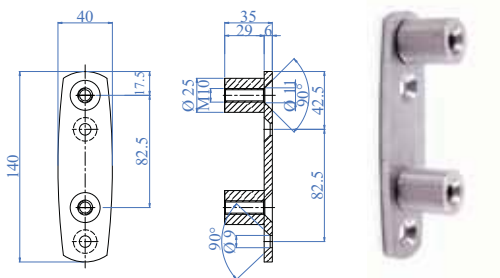


Anello di fissaggio tubo  
Fixing ring for tube

AISI316	Per tubo A For tube
E117100	Ø 33,7 mm 1 1/3" dia. X 5/64"
E117200	Ø 42,4 mm 1 2/3" dia.
E117300	40 x 40 mm 1 9/16" X 1 9/16"

Ancoraggi per Montanti a Piatto  
Anchors for Plate Newel Posts

Set composto da piastra a muro più distanziali, per montante a piatto  
Set composed of wall mounting plate and spacers for flat bar newel post



AISI304	AISI316	Dimensioni Dimensions
E112	E112316	140 x 40 x 35 mm 5 33/64" x 1 9/16" x 1 3/8"

Distanziatore 70 mm ancoraggio  
montanti a piatto  
Spacer 2 3/4" for plated newel  
post anchors

Spacer 2 3/4" for plated newel  
post anchors



AISI304	AISI316	Dimensioni Dimensions
E112/70	E112/70316	70 x Ø 25 mm 2 3/4" x 1" dia.

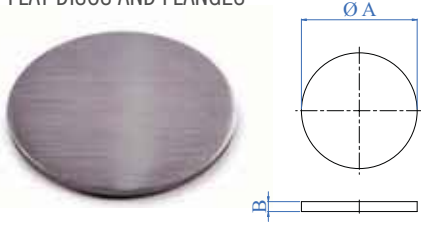


ARTEFERRO



ARTEFERRO

DISCHI E FLANGE PIATTI  
FLAT DISCS AND FLANGES



Disco piatto satinato  
grana 240  
Flat disc grain 240



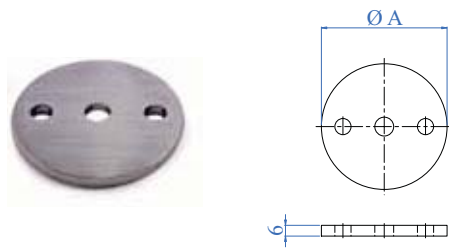
Satinati con grana 240,  
con fori senza svaso  
Satin finish with grain size  
240, with straight holes

AISI304	AISI316	Dimensioni Dimensions	A x B
E060	E060316	Ø 33 x 4 mm 1 19/64" dia. X 5/32"	
E061	E061316	Ø 42 x 4 mm 1 21/32" dia. X 5/32"	
E062	E062316	Ø 48 x 4 mm 1 57/64" dia. X 5/32"	
E063	E063316	Ø 60 x 4 mm 2 3/8" dia. X 5/32"	
E0631	E4753	Ø 70 x 6 mm 2 3/4" dia. X 15/64"	
E064	E064316	Ø 80 x 4 mm 3 5/32" dia. X 5/32"	
E065	E065316	Ø 100 x 4 mm 3 15/16" dia. X 5/32"	
E066	E066316	Ø 100 x 6 mm 3 15/16" dia. X 15/64"	
E069	E069316	Ø 120 x 6 mm 3 23/32" dia. X 15/64"	

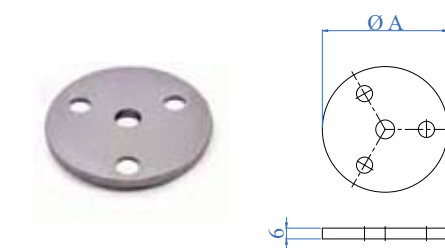
AISI304	AISI316	Dimensioni Dimensions	A x B	Fori Holes
E0680	E0680316	Ø 70 x 6 mm 2 3/4" dia. X 15/64"		2 x Ø 11 mm 2 X 7/16" dia.
E0681	E0681316	Ø 80 x 6 mm 3 5/32" dia. X 15/64"		2 x Ø 11 mm 2 X 7/16" dia.
E0682	E0682316	Ø 100 x 6 mm 3 15/16" dia. X 15/64"		2 x Ø 11 mm 2 X 7/16" dia.
E0683	E0683316	Ø 120 x 6 mm 4 23/32" dia. X 15/64"		2 x Ø 11 mm 2 X 7/16" dia.

info

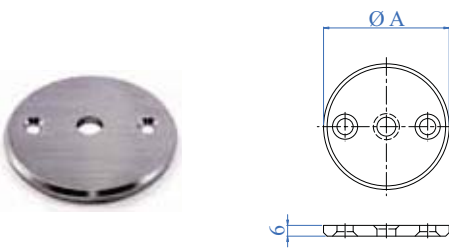
SU RICHIESTA OGNI ARTICOLO  
È SATINATO ANCHE SUI BORDI  
UPON REQUEST, THE ARTICLES CAN BE SATIN  
FINISHED ALSO ON THE BORDER SIDE.



AISI304	AISI316	Dimensioni Dimensions	A	Fori esterni External holes	Foro centrale Central hole
E0690	E4754	Ø 70 x 6 mm 2 3/4" dia. X 15/64"		2 x Ø 9 mm 2 X 23/64" dia.	Ø 10,5 mm 27/64" dia.

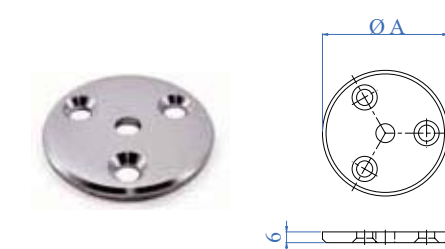


AISI304	AISI316	Dimensioni Dimensions	A	Fori esterni External holes	Foro centrale Central hole
E0695	E4755	Ø 70 x 6 mm 2 3/4" dia. X 15/64"		3 x Ø 9 mm 3 X 23/64" dia.	Ø 10,5 mm 27/64" dia.



Fori con svassi e perimetro  
bisellato  
Countersunk holes and  
chamfered perimeter

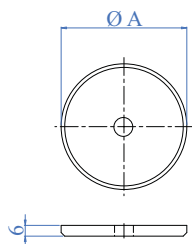
AISI304	AISI316	Dimensioni Dimensions	A	Fori esterni External holes	Foro centrale Central hole
E0690/D	E4754/D	Ø 70 x 6 mm 2 3/4" dia. X 15/64"		2 x Ø 9 mm 2 X 23/64" dia.	Ø 10,5 mm 27/64" dia.



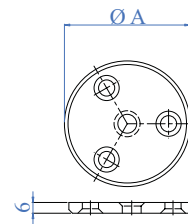
Fori con svassi e perimetro  
bisellato  
Countersunk holes and  
chamfered perimeter

AISI304	AISI316	Dimensioni Dimensions	A	Fori esterni External holes	Foro centrale Central hole
E0695/D	E4755/D	Ø 70 x 6 mm 2 3/4" dia. X 15/64"		3 x Ø 9 mm 3 X 23/64" dia.	Ø 10,5 mm 27/64" dia.

DISCHI E FLANGE PIATTI  
FLAT DISCS AND FLANGES

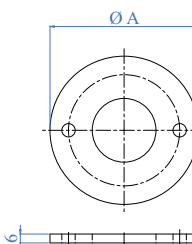


Fori con svassi e perimetro bisellato  
Countersunk holes and chamfered perimeter

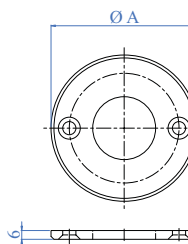


AISI304	AISI316	Dimensioni Dimensions A	Foro centrale Central hole
E0600	E0600316	Ø 100 x 6 mm 3 15/16" dia. X 15/64"	Ø 13 mm 33/64" dia.

AISI304	AISI316	Dimensioni Dimensions A	Fori esterni External holes	Foro centrale Central hole
E0700	E0700316	Ø 100 x 6 mm 3 15/16" dia. X 15/64"	3 x Ø 9 mm 3 X 23/64" dia.	Ø 13 mm 33/64" dia.

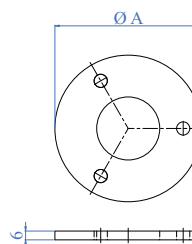


Fori con svassi e perimetro bisellato  
Countersunk holes and chamfered perimeter

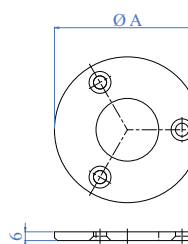


AISI304	AISI316	Dimensioni Dimensions A	Fori esterni External holes	Foro centrale Central hole
E0691	E0691316	Ø 100 x 6 mm 3 15/16" dia. X 15/64"	2 x Ø 9 mm 2 X 23/64" dia.	Ø 43 mm 1 11/16" dia.
E0692	E0692316	Ø 120 x 6 mm 4 23/32" dia. X 15/64"	2 x Ø 11 mm 2 X 7/16" dia.	Ø 49 mm 1 15/16" dia.
E0693	E0693316	Ø 120 x 6 mm 4 23/32" dia. X 15/64"	2 x Ø 11 mm 2 X 7/16" dia.	Ø 43 mm 1 11/16" dia.
E0694	E0694316	Ø 140 x 6 mm 5 33/64" dia. X 15/64"	2 x Ø 11 mm 2 X 7/16" dia.	Ø 49 mm 1 15/16" dia.

AISI304	AISI316	Dimensioni Dimensions A	Fori esterni External holes	Foro centrale Central hole
E0691/D	E0691316/D	Ø 100 x 6 mm 3 15/16" dia. X 15/64"	2 x Ø 9 mm 2 X 23/64" dia.	Ø 43 mm 1 11/16" dia.

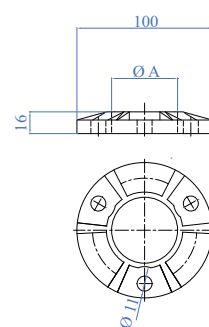


Fori con svassi e perimetro bisellato  
Countersunk holes and chamfered perimeter



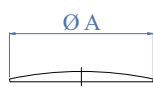
AISI304	AISI316	Dimensioni Dimensions A	Fori esterni External holes	Foro centrale Central hole
E06961	E47511	Ø 100 x 6 mm 3 15/16" dia. X 15/64"	3 x Ø 9 mm 3 X 23/64" dia.	Ø 34,5 mm 1 23/64" dia.
E0696	E4751	Ø 100 x 6 mm 3 15/16" dia. X 15/64"	3 x Ø 9 mm 3 X 23/64" dia.	Ø 43 mm 1 11/16" dia.
E0698	E4757	Ø 120 x 6 mm 4 23/32" dia. X 15/64"	3 x Ø 11 mm 3 X 7/16" dia.	Ø 43 mm 1 11/16" dia.
E0697	E4756	Ø 120 x 6 mm 4 23/32" dia. X 15/64"	3 x Ø 11 mm 3 X 7/16" dia.	Ø 49 mm 1 15/16" dia.
E0699	E4758	Ø 140 x 6 mm 5 33/64" dia. X 15/64"	3 x Ø 11 mm 3 X 7/16" dia.	Ø 49 mm 1 15/16" dia.
E06992	E47592	Ø 140 x 6 mm 5 33/64" dia. X 15/64"	3 x Ø 11 mm 3 X 7/16" dia.	Ø 51,5 mm 2 1/32" dia.
E06991	E4759	Ø 140 x 6 mm 5 33/64" dia. X 15/64"	3 x Ø 11 mm 3 X 7/16" dia.	Ø 61 mm 2 13/32" dia.

AISI304	AISI316	Dimensioni Dimensions A	Fori esterni External holes	Foro centrale Central hole
E0696/D	E4751/D	Ø 100 x 6 mm 3 15/16" dia. X 15/64"	3 x Ø 9 mm 3 X 23/64" dia.	Ø 43 mm 1 11/16" dia.
E06961/D	E47511/D	Ø 100 x 6 mm 3 15/16" dia. X 15/64"	3 x Ø 9 mm 3 X 23/64" dia.	Ø 34,5 mm 1 23/64" dia.



AISI316	Dimensioni Dimensions A	Fori esterni External holes	Foro centrale Central hole
E40820	Ø 100 x 16 mm 3 15/16" dia. X 5/8"	3 x Ø 11 mm 3 X 7/16" dia.	Ø 43 mm 1 11/16" dia.
E40830	Ø 100 x 16 mm 3 15/16" dia. X 5/8"	3 x Ø 11 mm 3 X 7/16" dia.	Ø 49 mm 1 15/16" dia.

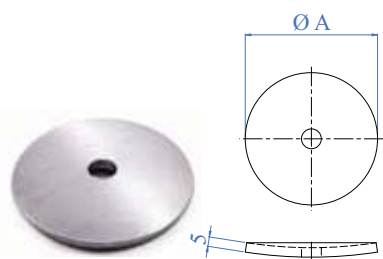
DISCHI BOMBATI  
ROUNDED CONVEX DISCS



Spessore ca. 1,5 - 2,0 mm  
satinati senza fori  
Thickness approx. 1/16" - 5/64"  
satin finish without holes

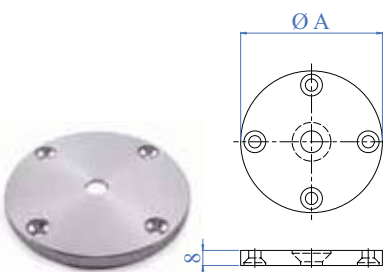


AISI304	Dimensioni Dimensions	A
E050	Ø 33,7 mm - 1 1/3" dia.	
E051	Ø 42,4 mm - 1 2/3" dia.	
E052	Ø 48,3 mm - 1 7/8" dia.	
E053	Ø 60,3 mm - 2 3/8" dia.	
E054	Ø 76,1 mm - 3" dia.	



**Flange Bombate**  
Rounded Convex Flanges  
Un lato satinato e protetto da PVC,  
con fori leggermente svasati  
One side with satin finish and  
protective PVC coating, holes  
slightly countersunk

AISI304	AISI316	Dimensioni Dimensions	A	Foro centrale Central hole	Fori esterni External holes
E0631/5	E0631316/5	Ø 70 x 5 mm 2 3/4" dia. X 13/64"		Ø 10,5 mm 27/64" dia.	No No
E0690/5	E0690316/5	Ø 70 x 5 mm 2 3/4" dia. X 13/64"		Ø 10,5 mm 27/64" dia.	2 x Ø 6,5 mm 2 x 17/64" dia.
E0695/5	E0695316/5	Ø 70 x 5 mm 2 3/4" dia. X 13/64"		Ø 10,5 mm 27/64" dia.	3 x Ø 6,5 mm 3 x 17/64" dia.

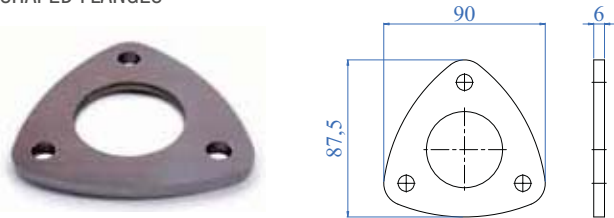


**Flangia di Ancoraggio (Alluminio)**  
Anchorage Flange (Aluminium)  
In alluminio, spessore 8 mm e  
foro centrale Ø 11 mm  
In aluminium, Thickness 5/16"  
and central hole 7/16" dia.

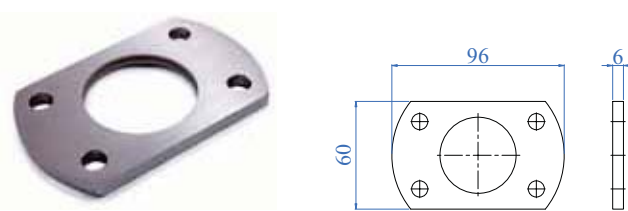
ALUMINIUM	Dimensioni Dimensions	A	Foro interno Internal hole	Fori esterni External holes
E015	Ø 55 mm 2 11/64" dia.		Ø 11 mm 5/16" dia.	3 x Ø 6 mm 3 x 15/64" dia.
E016	Ø 75 mm 2 61/64" dia.		Ø 11 mm 5/16" dia.	4 x Ø 6 mm 4 x 15/64" dia.
E017	Ø 95 mm 3 47/64" dia.		Ø 11 mm 5/16" dia.	4 x Ø 6 mm 4 x 15/64" dia.



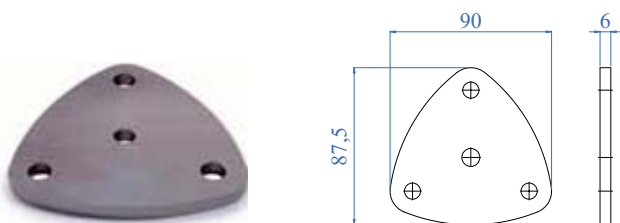
FLANGE SAGOMATE  
SHAPED FLANGES



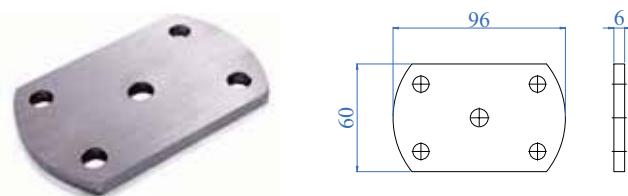
AISI304	AISI316	Dimensioni Dimensions	Foro centrale Central hole	Fori esterni External holes	Spess. Thickn.
E08110	E08110316	87,5 x 90 mm 3 7/16" x 3 9/16"	Ø 43 mm 1 11/16" dia.	3 x Ø 11 mm 3 x 7/16" dia.	6 mm 15/64"
E08120	E08120316	87,5 x 90 mm 3 7/16" x 3 9/16"	Ø 34,5 mm 1 23/64" dia.	3 x Ø 11 mm 3 x 7/16" dia.	6 mm 15/64"



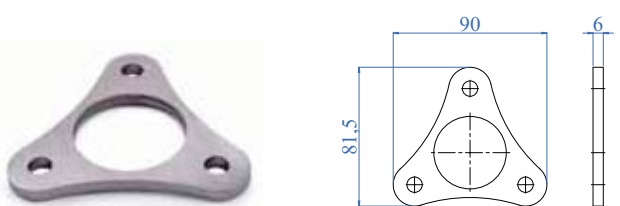
AISI304	AISI316	Dimensioni Dimensions	Foro centrale Central hole	Fori esterni External holes	Spess. Thickn.
E08310	E08310316	96 x 60 mm 3 25/32" x 2 23/64"	Ø 43 mm 1 11/16" dia.	4 x Ø 11 mm 4 x 7/16" dia.	6 mm 15/64"
E08320	E08320316	96 x 60 mm 3 25/32" x 2 23/64"	Ø 34,5 mm 1 23/64" dia.	4 x Ø 11 mm 4 x 7/16" dia.	6 mm 15/64"



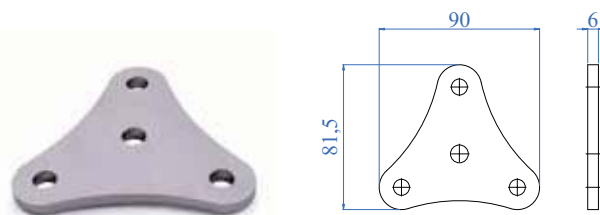
AISI304	AISI316	Dimensioni Dimensions	Foro centrale Central hole	Fori esterni External holes	Spess. Thickn.
E08150	E08150316	87,5 x 90 mm 3 7/16" x 3 9/16"	Ø 12 mm 1/2" dia.	3 x Ø 11 mm 3 x 7/16" dia.	6 mm 15/64"
E08160	E08160316	87,5 x 90 mm 3 7/16" x 3 9/16"	Ø 10 mm 3/8" dia.	3 x Ø 11 mm 3 x 7/16" dia.	6 mm 15/64"



AISI304	AISI316	Dimensioni Dimensions	Foro centrale Central hole	Fori esterni External holes	Spess. Thickn.
E08350	E08350316	96 x 60 mm 3 25/32" x 2 23/64"	Ø 12 mm 1/2" dia.	4 x Ø 11 mm 4 x 7/16" dia.	6 mm 15/64"
E08360	E08360316	96 x 60 mm 3 25/32" x 2 23/64"	Ø 10 mm 3/8" dia.	4 x Ø 11 mm 4 x 7/16" dia.	6 mm 15/64"



AISI304	AISI316	Dimensioni Dimensions	Foro centrale Central hole	Fori esterni External holes	Spess. Thickn.
E08210	E08210316	81,5 x 90 mm 3 7/32" x 3 9/16"	Ø 43 mm 1 11/16" dia.	3 x Ø 11 mm 3 x 7/16" dia.	6 mm 15/64"
E08220	E08220316	81,5 x 90 mm 3 7/32" x 3 9/16"	Ø 34,5 mm 1 23/64" dia.	3 x Ø 11 mm 3 x 7/16" dia.	6 mm 15/64"



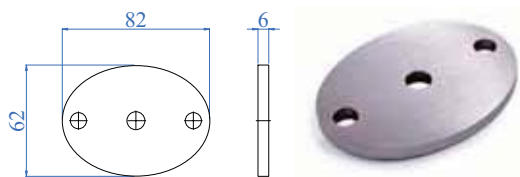
AISI304	AISI316	Dimensioni Dimensions	Foro centrale Central hole	Fori esterni External holes	Spess. Thickn.
E08250	E08250316	81,5 x 90 mm 3 7/32" x 3 9/16"	Ø 12 mm 1/2" dia.	3 x Ø 11 mm 3 x 7/16" dia.	6 mm 15/64"
E08260	E08260316	81,5 x 90 mm 3 7/32" x 3 9/16"	Ø 10 mm 3/8" dia.	3 x Ø 11 mm 3 x 7/16" dia.	6 mm 15/64"

info

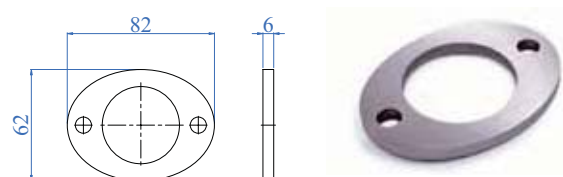
SU RICHIESTA OGNI ARTICOLO PUÒ ESSERE  
SATINATO ANCHE SUI BORDI  
UPON REQUEST, THE ARTICLES CAN BE SATIN  
FINISHED ALSO ON THE BORDER SIDE.



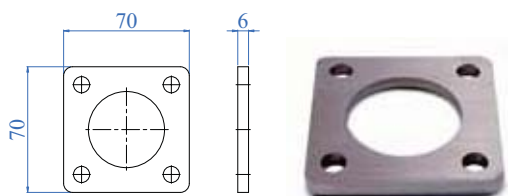
FLANGE SAGOMATE  
SHAPED FLANGES



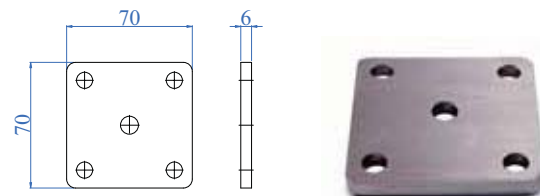
AISI304	AISI316	Dimensioni Dimensions	Foro centrale Central hole	Fori esterni External holes	Spessore Thickness
E08450	E08450316	82 x 62 mm 3 15/64" x 2 7/16"	Ø 12 mm 1/2" dia.	2 x Ø 11 mm 2 x 7/16" dia.	6 mm 15/64"
E08460	E08460316	82 x 62 mm 3 15/64" x 2 7/16"	Ø 10 mm 3/8" dia.	2 x Ø 11 mm 2 x 7/16" dia.	6 mm 15/64"



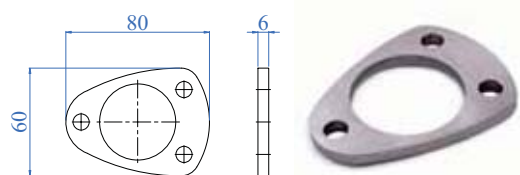
AISI304	AISI316	Dimensioni Dimensions	Foro centrale Central hole	Fori esterni External holes	Spessore Thickness
E08410	E08410316	82 x 62 mm 3 15/64" x 2 7/16"	Ø 43 mm 1 11/16" dia.	2 x Ø 11 mm 2 x 7/16" dia.	6 mm 15/64"
E08420	E08420316	82 x 62 mm 3 15/64" x 2 7/16"	Ø 34,5 mm 1 23/64" dia.	2 x Ø 11 mm 2 x 7/16" dia.	6 mm 15/64"



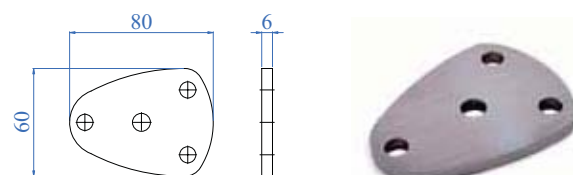
AISI304	AISI316	Dimensioni Dimensions	Foro centrale Central hole	Fori esterni External holes	Spessore Thickness
E08510	E08510316	70 x 70 mm 2 3/4" x 2 3/4"	Ø 43 mm 1 11/16" dia.	4 x Ø 11 mm 4 x 7/16" dia.	6 mm 15/64"
E08520	E08520316	70 x 70 mm 2 3/4" x 2 3/4"	Ø 34,5 mm 1 23/64" dia.	4 x Ø 11 mm 4 x 7/16" dia.	6 mm 15/64"



AISI304	AISI316	Dimensioni Dimensions	Foro centrale Central hole	Fori esterni External holes	Spessore Thickness
E08550	E08550316	70 x 70 mm 2 3/4" x 2 3/4"	Ø 12 mm 1/2" dia.	4 x Ø 11 mm 4 x 7/16" dia.	6 mm 15/64"
E08560	E08560316	70 x 70 mm 2 3/4" x 2 3/4"	Ø 10 mm 3/8" dia.	4 x Ø 11 mm 4 x 7/16" dia.	6 mm 15/64"



AISI304	AISI316	Dimensioni Dimensions	Foro centrale Central hole	Fori esterni External holes	Spessore Thickness
E08610	E08610316	80 x 60 mm 3 5/32" x 2 23/64"	Ø 43 mm 1 11/16" dia.	3 x Ø 11 mm 3 x 7/16" dia.	6 mm 15/64"
E08620	E08620316	80 x 60 mm 3 5/32" x 2 23/64"	Ø 34,5 mm 1 23/64" dia.	3 x Ø 11 mm 3 x 7/16" dia.	6 mm 15/64"

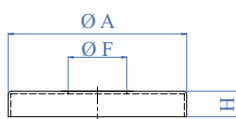


AISI304	AISI316	Dimensioni Dimensions	Foro centrale Central hole	Fori esterni External holes	Spessore Thickness
E08650	E08650316	80 x 60 mm 3 5/32" x 2 23/64"	Ø 12 mm 1/2" dia.	3 x Ø 11 mm 3 x 7/16" dia.	6 mm 15/64"
E08660	E08660316	80 x 60 mm 3 5/32" x 2 23/64"	Ø 10 mm 3/8" dia.	3 x Ø 11 mm 3 x 7/16" dia.	6 mm 15/64"

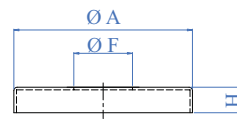
SU RICHIESTA OGNI ARTICOLO PUÒ ESSERE  
SATINATO ANCHE SUI BORDI  
UPON REQUEST, THE ARTICLES CAN BE SATIN  
FINISHED ALSO ON THE BORDER SIDE.

# • Elementi di Ancoraggio • Anchorage Elements

## COPRIFLANGE FLANGE CANOPIES



Satinata con grana 240,  
spessore 1,5 mm  
Satin finish with grain size  
240, thickness 1/16"

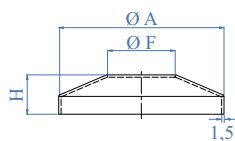


Satinata con grana 240,  
spessore 1,5 mm  
Satin finish with grain size  
240, thickness 1/16"

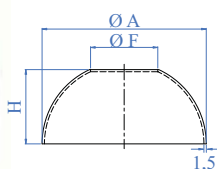
**B**

AISI304	AISI316	Dimensioni Dimensions	A	Foro Hole	F	Altezza Height	H
E0180	E0180316	Ø 45 mm 1 3/4" dia.		Ø 12,5 mm 1/2" dia.		10 mm 3/8"	
E018	—	Ø 62 mm 2 7/16" dia.		Ø 20,5 mm 13/16" dia.		15 mm 19/32"	
E0181	E0181316	Ø 62 mm 2 7/16" dia.		Ø 12,5 mm 1/2" dia.		15 mm 19/32"	
E0182	E4070	Ø 76 mm 2 63/64" dia.		Ø 12,5 mm 1/2" dia.		12 mm 1/2"	
E0183	E4071	Ø 76 mm 2 63/64" dia.		Ø 14,5 mm 37/64" dia.		12 mm 1/2"	

AISI304	AISI316	Dimensioni Dimensions	A	Foro Hole	F	Altezza Height	H
E0184	E0184316	Ø 76 mm 2 63/64" dia.		Ø 43,0 mm 1 11/16" dia.		12 mm 1/2"	
E0191	E0191316	Ø 85 mm 3 15/64" dia.		Ø 34,5 mm 1 23/64" dia.		15 mm 19/32"	
E019/38	E4019/38	Ø 85 mm 3 15/64" dia.		Ø 39 mm 1 17/32" dia.		15 mm 19/32"	
E0192	E0192316	Ø 85 mm 3 15/64" dia.		Ø 41,0 mm 1 39/64" dia.		15 mm 19/32"	
E019	E019316	Ø 85 mm 3 15/64" dia.		Ø 43,0 mm 1 11/16" dia.		15 mm 19/32"	
E020/S	E4072/S	Ø 105 mm 4 9/64" dia.		Ø 34,5 mm 1 23/64" dia.		15 mm 19/32"	
E0202	E4074	Ø 105 mm 4 9/64" dia.		Ø 34,5 mm 1 23/64" dia.		25 mm 63/64"	
E020/38	—	Ø 105 mm 4 9/64" dia.		Ø 38,5 mm 1 1/2" dia.		15 mm 19/32"	
—	E4072/38	Ø 105 mm 4 9/64" dia.		Ø 39 mm 1 17/32" dia.		15 mm 19/32"	
E020	E4072	Ø 105 mm 4 9/64" dia.		Ø 43,0 mm 1 11/16" dia.		15 mm 19/32"	
E020/C	E4072/C	Ø 105 mm 4 9/64" dia.		Ø 43,0 mm 1 11/16" dia.		25 mm 63/64"	
E0201	—	Ø 105 mm 4 9/64" dia.		Ø 49,0 mm 1 15/16" dia.		15 mm 19/32"	
E0201/C	E4073	Ø 105 mm 4 9/64" dia.		Ø 49,0 mm 1 15/16" dia.		25 mm 63/64"	
E02011	E40731	Ø 105 mm 4 9/64" dia.		Ø 51,50 mm 2" dia.		25 mm 63/64"	
E0203	—	Ø 129 mm 5 5/64" dia.		Ø 43,0 mm 1 11/16" dia.		25 mm 63/64"	
E0204	E4075	Ø 129 mm 5 5/64" dia.		Ø 49,0 mm 1 15/16" dia.		25 mm 63/64"	
—	E4076	Ø 145 mm 5 45/64" dia.		Ø 49,0 mm 1 15/16" dia.		25 mm 63/64"	
—	E4077	Ø 145 mm 5 45/64" dia.		Ø 61,0 mm 2 13/32" dia.		25 mm 63/64"	



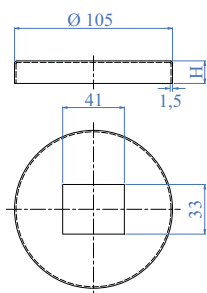
AISI304	AISI316	Dimensioni Dimensions	A	Foro Hole	F	Altezza Height	H
E02061	E02061316	85 mm 3 11/32" dia.		Ø 34,5 mm 1 23/64" dia.		25 mm 63/64"	
E02062	E02062316	85 mm 3 11/32" dia.		Ø 43,0 mm 1 11/16" dia.		25 mm 63/64"	
E02063	E02063316	105 mm 4 9/64" dia.		Ø 34,5 mm 1 23/64" dia.		25 mm 63/64"	
E02064	E02064316	105 mm 4 9/64" dia.		Ø 43,0 mm 1 11/16" dia.		25 mm 63/64"	



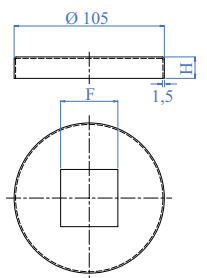
AISI304	AISI316	Dimensioni Dimensions	A	Foro Hole	F	Altezza Height	H
E02065	E02065316	85 mm 3 11/32" dia.		Ø 34,5 mm 1 23/64" dia.		38 mm 1 1/2"	
E02066	E02066316	85 mm 3 11/32" dia.		Ø 43,0 mm 1 11/16" dia.		38 mm 1 1/2"	
E02067	E02067316	105 mm 4 9/64" dia.		Ø 34,5 mm 1 23/64" dia.		48 mm 1 57/64"	
E02068	E02068316	105 mm 4 9/64" dia.		Ø 43,0 mm 1 11/16" dia.		48 mm 1 57/64"	



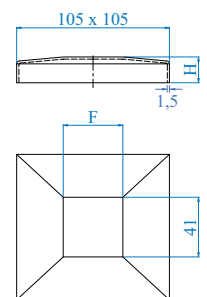
COPRIFLANGIA PER ANCORAGGIO MONTANTE A PIATTI E TUBO QUADRO  
FLANGE CANOPY FOR DOUBLE PLATE NEWEL POST OR SQUARE TUBE



AISI304	AISI316	Dimensioni Dimensions	Foro Hole F	Altezza Height H
E0205	E0205316	Ø 105 mm 4 9/64" dia.	33 x 41 mm 1 19/64" x 1 39/64"	15 mm 19/32"



AISI304	AISI316	Dimensioni Dimensions	Foro Hole F	Altezza Height H
E02051	E02051316	Ø 105 mm 4 9/64" dia.	41 x 41 mm 1 39/64" x 1 39/64"	15 mm 19/32"



AISI316	Dimensioni Dimensions	Foro Hole F	Altezza Height H
E02052316	105 x 105 mm 4 9/64" x 4 9/64"	41 x 41 mm 1 39/64" x 1 39/64"	15 mm 19/32"



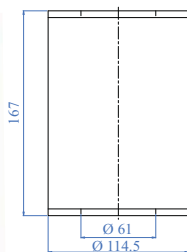
ARTEFERRO

ELEMENTO PER SCALA A CHIOCCIOLA AUTOPORTANTE  
PARTS FOR SELF SUPPORTING SPIRAL STAIRS



UN SEMPLICE MODO PER CREARE LA  
TUA SCALA A CHIOCCIOLA

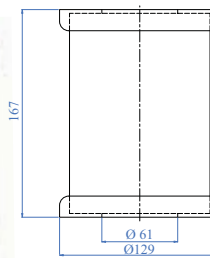
A SIMPLE WAY TO CREATE YOUR  
SPIRAL STAIRCASE



Acciaio inox AISI 304 satinato  
(su richiesta lucido)  
Stainless steel AISI 304 satin finish  
(upon request with a polished finish)

AISI304

ES200



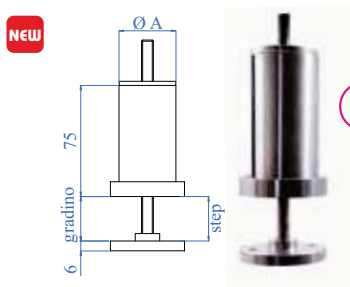
Ferro verniciato  
Powder coat steel

IRON

IS200

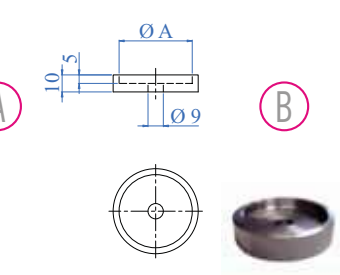
NEW

RACCORDERIA PER FISSAGGIO SU GRADINO A SBALZO  
CONNECTORS FOR FIXING PROJECTING STEPS



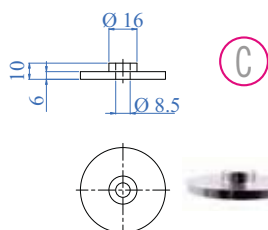
Ancoraggio autofissante a gradino  
Auto fastening anchor for steps

AISI304	Per tubo For tube	A
ES30010	Ø 33,7 x 2,0 mm 1 1/3" dia. x 5/64"	
ES30020	Ø 42,4 x 2,0 mm 1 2/3" dia. x 5/64"	



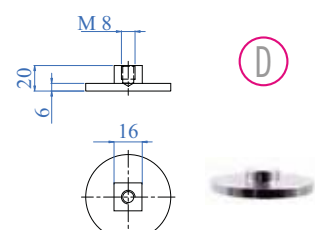
Flangia distanziale  
Spacer flange

AISI304	Per tubo For tube	A
ES31010	Ø 33,7 x 2,0 mm 1 1/3" dia. x 5/64"	
ES31020	Ø 42,4 x 2,0 mm 1 2/3" dia. x 5/64"	



Terminale  
End cap

AISI304	Per tubo For tube	A
ES32010	Ø 33,7 x 2,0 mm 1 1/3" dia. x 5/64"	
ES32020	Ø 42,4 x 2,0 mm 1 2/3" dia. x 5/64"	



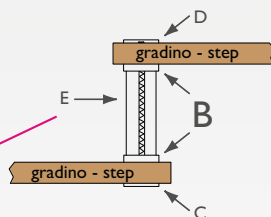
Terminale  
End cap

AISI304	Per tubo For tube	A
ES33010	Ø 33,7 x 2,0 mm 1 1/3" dia. x 5/64"	
ES33020	Ø 42,4 x 2,0 mm 1 2/3" dia. x 5/64"	

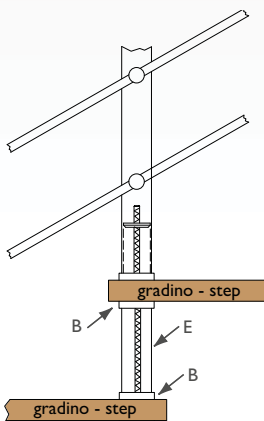
info



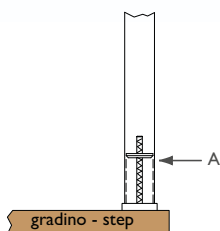
Per creare un distanziale per gradini  
Create a space for area between steps



Per creare un ancoraggio a gradino con effetto passante  
Here you can create a step anchor with a "pass through" effect



Per ancorare i piantoni ad un gradino a sbalzo  
Anchor the newel post to a projected steps

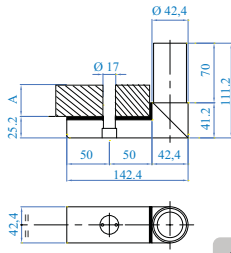


Barra filettata  
Threaded bar

AISI304	Lunghezza Length
ES340/200	200 mm - 7 7/8"
ES340/250	250 mm - 9 7/8"
ES340/300	300 mm - 11 13/16"
ES340/350	350 mm - 13 3/4"
ES340/400	400 mm - 15 3/4"

# • Elementi di Ancoraggio • Anchorage Elements

## ELEMENTI PER GRADINI SOSPESI ELEMENTS FOR HANGING STEPS



NEW

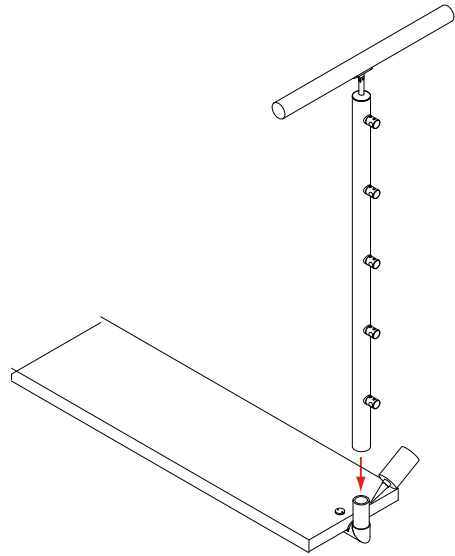
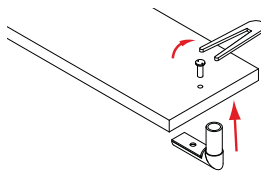
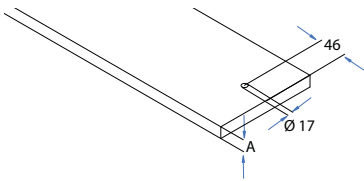
AISI316

Per tubo  
For tube

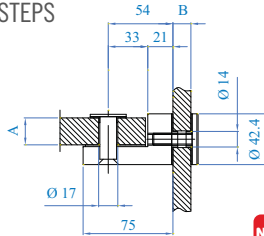
A

E022710

Ø 42,4 x 2,0 mm da 30 a 45 mm  
1 2/3" dia. x 5/64" from 1 3/16" to 1 3/4"



## ELEMENTI PER GRADINI SOSPESI IN VETRO ELEMENTS FOR GLASS HANGING STEPS



NEW

AISI316

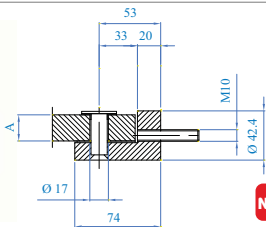
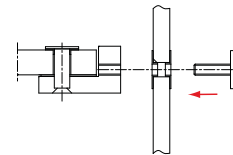
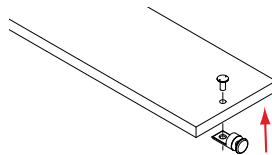
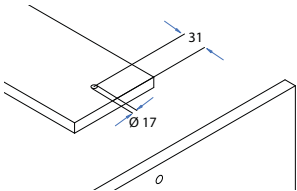
A

B

E022720

da 30 a 45 mm  
from 1 3/16" to 1 3/4"

da 12 a 25 mm  
from 1/2" to 1"



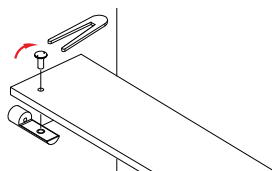
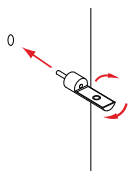
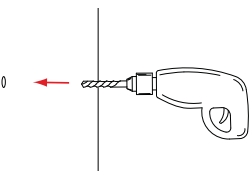
NEW

AISI316

A

E022730

da 30 a 45 mm  
from 1 3/16" to 1 3/4"







## CUSTOMER SERVICE

Mandaci il progetto della tua casa, svilupperemo noi la tua scala in breve tempo, disegnando e quantificando i prodotti necessari

Send us the project of your home, we'll develop your stairway in a short time, drawing and quantifying the products required

 Tel. (+39) 0445 580 580

 [india@arteferro.com](mailto:india@arteferro.com)



ARTEFERRO



ARTEFERRO



# PLASMA

Il taglio al plasma è una tecnologia utilizzata per tagliare lastre d'acciaio e di altri materiali, utilizzando una torcia al plasma.

Il plasma è un mezzo efficace di taglio sia per lamiere sottili che spesse.

Grazie a questa tecnologia possiamo realizzare prodotti su disegno mantenendo un' altissima qualità e prezzi vantaggiosi

Plasma cutting is a technology used to cut steel plates and other materials, using a plasma torch.

Plasma is an effective means of cutting both thin and thick steel plates.

With this technology we can make a product following a design maintaining a very high quality and competitive prices

☎ Tel. (+39) 0445 580 580

@ [india@arteferro.com](mailto:india@arteferro.com)

